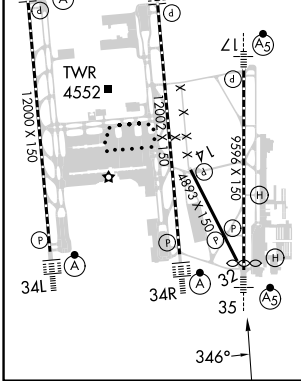
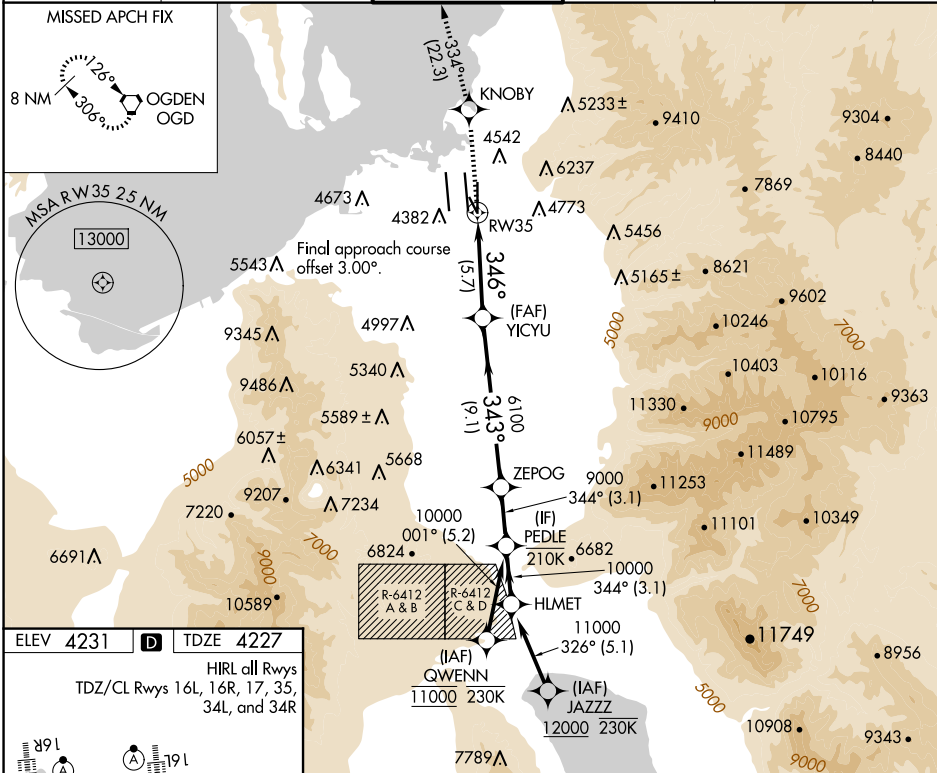


APP CRS	Rwy Idg	9272
346°	TDZE	4227
	Apt Elev	4231

RNAV (RNP) Z RWY 35

SALT LAKE CITY INTL (SLC)

RNP AR APCH - GPS.		MALSR	MISSED APPROACH: Climb to 9000 direct KNOBY and on track 334° to OGD VORTAC and hold.					
▼ For uncompensated Baro-VNAV systems, procedure NA below -10°C or above 54°C. For inop ALS, increase RNP 0.20 all Cats visibility to RVR 4500.			D-ATIS	SALT LAKE CITY APP CON	SALT LAKE CITY TOWER	GND CON	CLNC DEL	CPDLC
			124.75 125.625	125.7 284.6	118.3 257.8	121.9 348.6	127.3 379.975	



9000	KNOBY	tr 334°	OGD	VGSI and RNAV glidepath not coincident (VGSI Angle 3.00/TCH 74).	HELMET
				ZEPOG	PEDLE
				9000	11000
				344°	344°
				346°	343°
				6100	10000
				5.7 NM	9.1 NM
				3.1 NM	3.1 NM
				GP 3.00°	TCH 55

CATEGORY	A	B	C	D	E
RNP 0.20 DA		4502/24	275 (300-½)		
RNP 0.30 DA		4625/35	398 (400-¾)		

AUTHORIZATION REQUIRED