

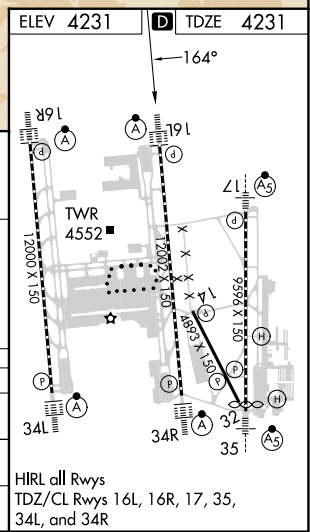
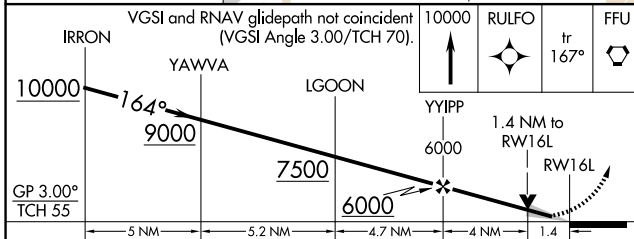
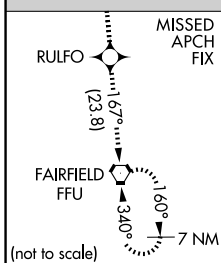
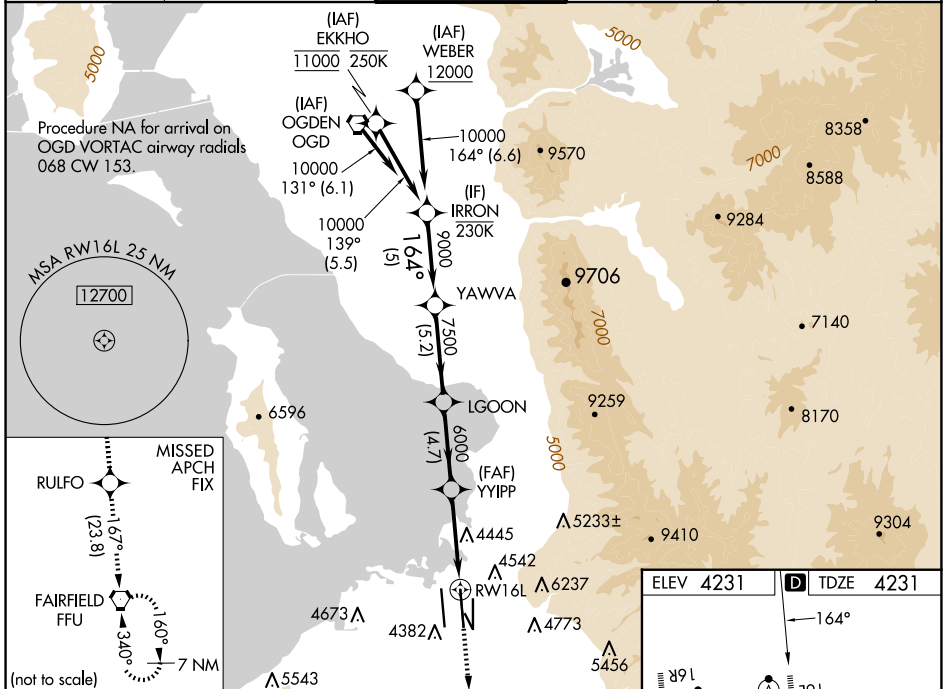
WAAS CH <b>70546</b> <b>W16B</b>	APP CRS <b>164°</b>	Rwy Idg TDZE Apt Elev	<b>12002</b> <b>4231</b> <b>4231</b>
--	------------------------	-----------------------------	--

# RNAV (GPS) Y RWY 16L

SALT LAKE CITY INTL (SLC)

RNP APCH - GPS.		ALSIF-2 	MISSED APPROACH: Climb to 10000 direct RULFO and on track 167° to FFU VORTAC and hold.
<p>▼ LNAV procedure NA during simultaneous operations. Simultaneous approach authorized. Use of FD or AP required during simultaneous operations. For uncompensated Baro-VNAV systems, LNAV/VNAV NA below -10°C or above 49°C. For inop ALS, increase LPV Cat E visibility to RVR 4000, increase LNAV/VNAV Cat A visibility to RVR 4500, increase Cats C/D visibility to RVR 5500, increase Cat E visibility to 6000, and increase LNAV Cat E visibility to 1 1/2 SM.</p>			

D-ATIS <b>124.75 125.625</b>	SALT LAKE CITY APP CON <b>125.7 284.6</b>	SALT LAKE CITY TOWER <b>119.05 257.8</b>	GND CON <b>123.775 348.6</b>	CLNC DEL <b>127.3 379.975</b>	CPDLC
---------------------------------	--	---	---------------------------------	----------------------------------	-------



SW-4, 20 FEB 2025 to 20 MAR 2025

SW-4, 20 FEB 2025 to 20 MAR 2025