

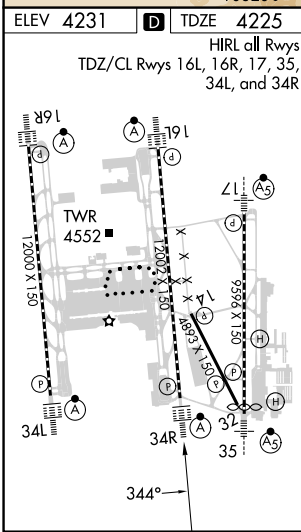
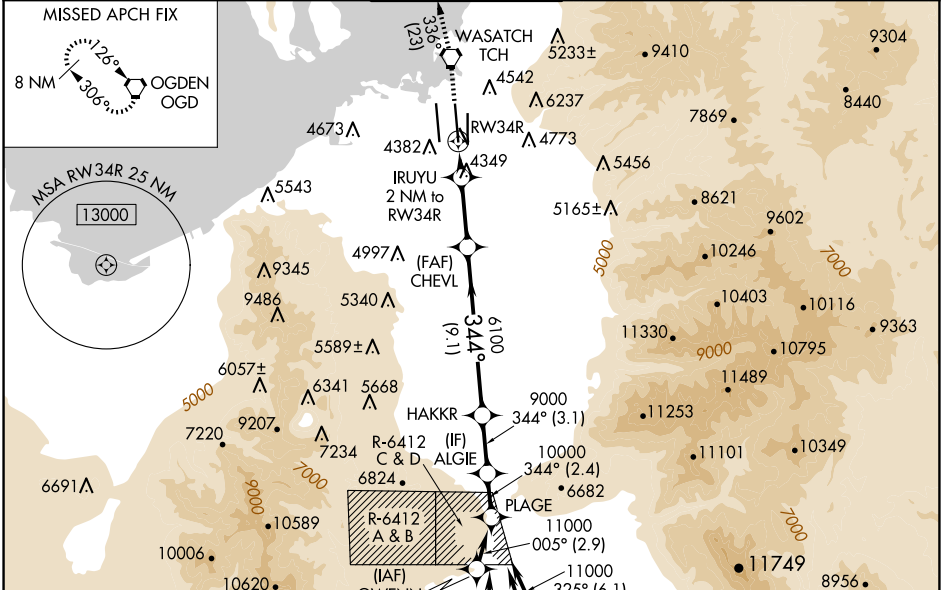
WAAS CH <b>49230</b> <b>W34A</b>	APP CRS <b>344°</b>	Rwy ldg TDZE <b>4225</b> Apt Elev <b>4231</b>
--	------------------------	---

# RNAV (GPS) Y RWY 34R

SALT LAKE CITY INTL (SLC)

RNP APCH - GPS		ALS-F-2	MISSED APPROACH: Climb to 9000 direct TCH VORTAC and on track 336° to OGD VORTAC and hold.
<p>Simultaneous approach authorized. For uncompensated Baro-VNAV systems, LNAV/VNAV NA below -10°C or above 49°C. Use of FD or AP providing RNAV track guidance required during simultaneous operations. LNAV procedure NA during simultaneous operations. For inop ALS, increase LPV Cat E visibility to RVR 4000, LNAV/VNAV Cat E visibility to RVR 5000, LNAV Cots C/D visibility to RVR 5500, LNAV Cat E visibility to RVR 6000. Cat E restricted to USAF/USN aircraft.</p>			

D-ATIS <b>124.75 125.625</b>	SALT LAKE CITY APP CON <b>125.7 284.6</b>	SALT LAKE CITY TOWER <b>119.05 257.8</b>	GND CON <b>123.775 348.6</b>	CLNC DEL <b>127.3 379.975</b>	CPDLC
---------------------------------	--	---	---------------------------------	----------------------------------	-------



ELEV 4231	TDZE 4225	HIRL all Rwys TDZ/CL Rwys 16L, 16R, 17, 35, 34L, and 34R	
9000	TCH	ir 336°	OGD
VGSIs and RNAV glidepath not coincident (VGSi Angle 3.00/TCH 73).		ALGIE	PLAGE
IRUYU 2 NM to RW34R		CHEVL	HAKKR
1 NM to RW34R		6100	9000
RW34R		4900	11000
1 NM		1 NM	3.8 NM
9.1 NM		3.1 NM	2.4 NM
CATEGORY	A	B	D
LPV DA	4425/18 200 (200-½)		
LNAV/VNAV DA	4557/26 332 (400-½)		
LNAV MDA	4600/24	375 (400-½)	4600/35 375 (400-⅝)
			4640/40 415 (500-¾)

SW-4, 20 FEB 2025 to 20 MAR 2025

SW-4, 20 FEB 2025 to 20 MAR 2025