

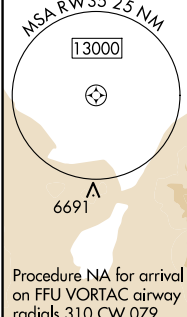
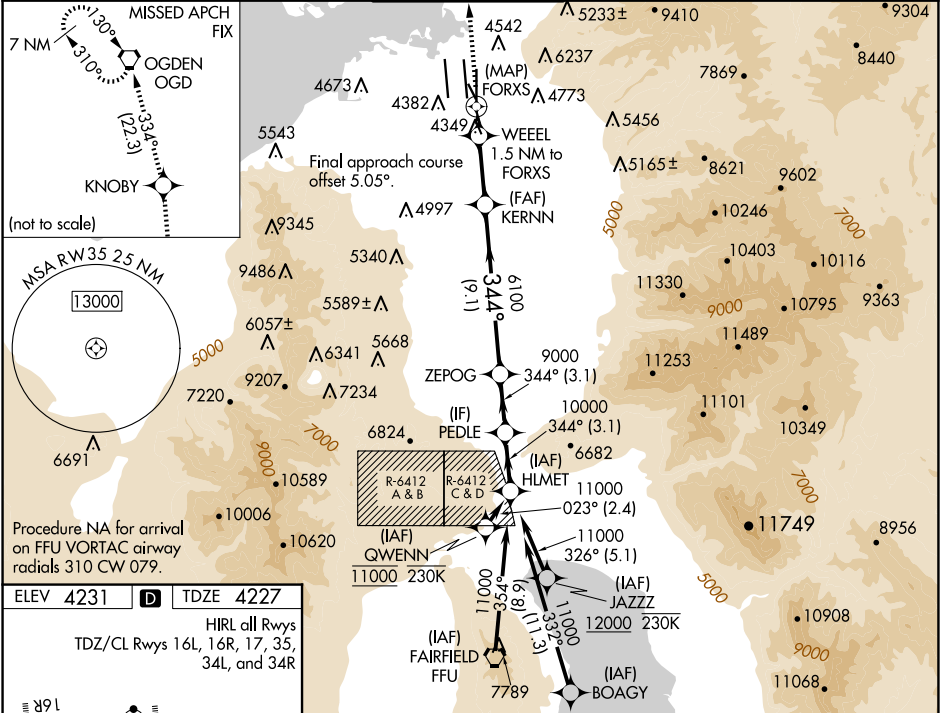
WAAS CH <b>42843</b> <b>W35A</b>	APP CRS <b>344°</b>	Rwy Idg TDZE Apt Elev	<b>9272</b> <b>4227</b> <b>4231</b>
--	------------------------	-----------------------------	---

# RNAV (GPS) Y RWY 35

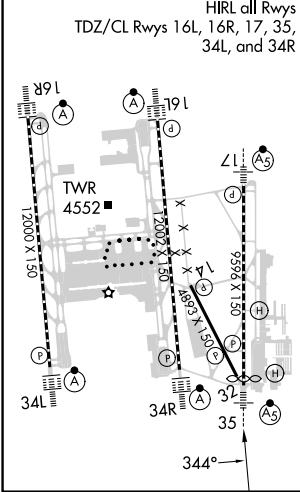
SALT LAKE CITY INTL (SLC)

RNP APCH - GPS.	MALSR	MISSED APPROACH: Climb to 9000 direct KNOBY and on track 334° to OGD VORTAC and hold.
<p>Simultaneous approach authorized. LNAV procedure NA during simultaneous operations. For uncompensated Baro-VNAV systems, LNAV/VNAV NA below -23°C or above 49°C. Use of FD or AP required during simultaneous operations. For inop ALS, increase LPV Cat E visibility to RVR 4000, increase LNAV/VNAV all Cats visibility to RVR 4500, and increase LNAV Cats C/D/E visibility to RVR 5500.</p>		

D-ATIS <b>124.75 125.625</b>	SALT LAKE CITY APP CON <b>125.7 284.6</b>	SALT LAKE CITY TOWER <b>118.3 257.8</b>	GND CON <b>121.9 348.6</b>	CLNC DEL <b>127.3 379.975</b>	CPDLC
---------------------------------	--	--	-------------------------------	----------------------------------	-------



ELEV <b>4231</b>	TDZE <b>4227</b>
------------------	------------------



9000	KNOBY	OGD	VGS1 and RNAV glidepath not coincident (VGS1 Angle 3.00/TCH 74).		
↑	✦	tr 334°	WEEL	HLMET	
			0.5 NM to FORXS	1.5 NM to FORXS	344°
			4900	6100	11000
			0.4	0.5	1 NM
			3.8 NM	9.1 NM	3.1 NM
			3.1 NM		
CATEGORY	A	B	C	D	E
LPV DA	4478/24 251 (300-½)				
LNAV/VNAV DA	4500/24 273 (300-½)		4507/24 280 (300-½)		4547/24 320 (400-½)
LNAV MDA	4600/24 373 (400-½)		4600/40 373 (400-¾)		

SW-4, 20 FEB 2025 to 20 MAR 2025

SW-4, 20 FEB 2025 to 20 MAR 2025