

# SPANE EIGHT ARRIVAL

AL-365 (FAA)

SALT LAKE CITY INTL (SLC)  
SALT LAKE CITY, UTAH

SW-4, 20 FEB 2025 to 20 MAR 2025

**ARRIVAL ROUTE DESCRIPTION**

**HELPR TRANSITION (HELPR.SPANE8):** From over HELPR on FFU R-100 to SPANE, thence . . . .

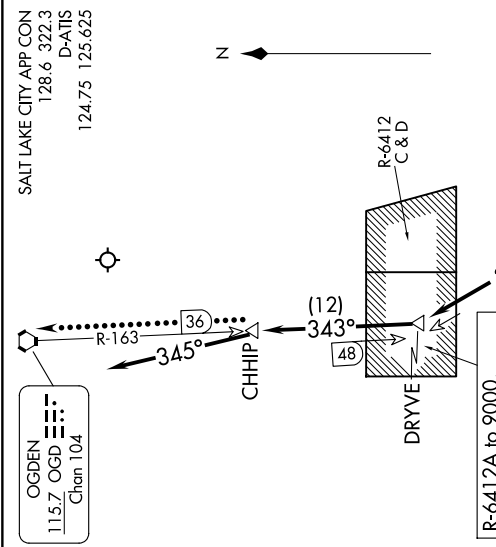
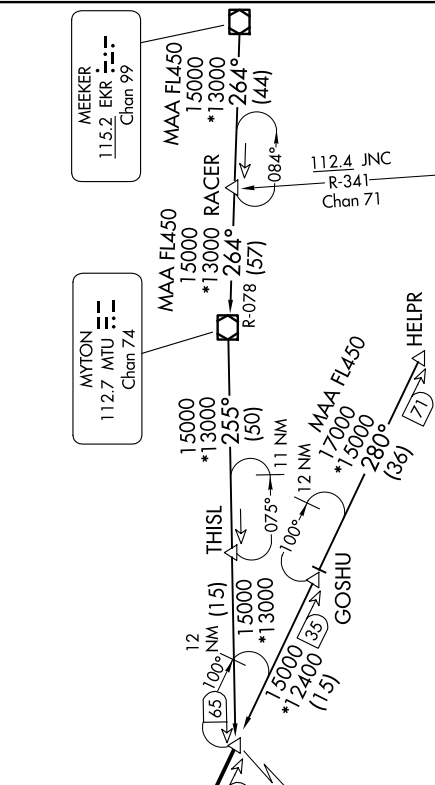
**MEEKER TRANSITION (EKR.SPANE8):** From over EKR VOR/DME on EKR R-264 to RACER, then on EKR R-264 and MTU R-078 to MTU VOR/DME, then on MTU R-255 to SPANE, thence . . . .

**LANDING NORTH:** From SPANE on FFU R-100 to BOAGY, then to FFU VORTAC. Expect ILS RWY 34R approach.

**LANDING SOUTH:** From SPANE on FFU R-100 to BOAGY, then to FFU VORTAC, then on FFU R-314 to DRYVE, then on OGD R-163 to CHHIP. After CHHIP, fly heading 345° for vectors to ILS or Visual RWY 16R approach.

**LOST COMMUNICATIONS**

**LANDING SOUTH:** In the event of lost communications, at CHHIP proceed direct OGD VORTAC. Maintain 12000 until OGD VORTAC.



**VERTICAL NAVIGATION PLANNING INFORMATION**

**PROP/TURBOPROP**

LANDING NORTH: Expect 16000  
LANDING SOUTH: Expect 17000

**JET**

LANDING NORTH: Expect 16000  
LANDING SOUTH: Expect FL190

**NOTE: DME required.**

**NOTE: Chart not to scale.**

# SPANE EIGHT ARRIVAL

(SPANE.SPANE8) 16MAY24

SALT LAKE CITY, UTAH  
SALT LAKE CITY INTL (SLC)

SW-4, 20 FEB 2025 to 20 MAR 2025