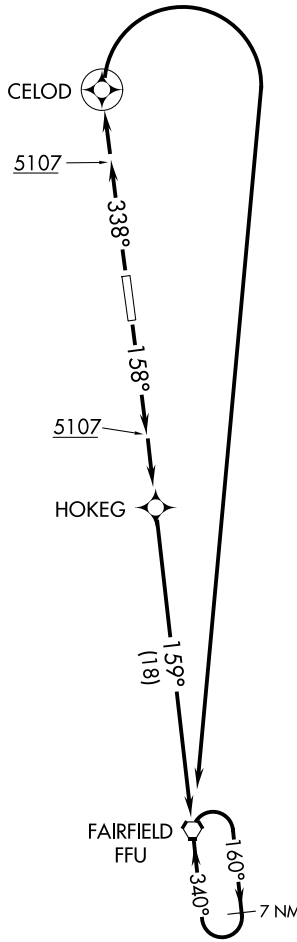


SALT LAKE CITY DEP CON
120.9 322.3
CLNC DEL
127.0
UNICOM
122.7 (CTAF)
AWOS-3
134.425

**TOP ALTITUDE:
9000**



NOTE: RNAV 1.
NOTE: GPS required.

TAKEOFF MINIMUMS

Rwy 16: Standard with minimum climb of 300' per NM to 7800.
Rwy 34: Standard with minimum climb of 495' per NM to 9000.

NOTE: Chart not to scale.



DEPARTURE ROUTE DESCRIPTION

TAKEOFF RUNWAY 16: Climb heading 158° to 5107, then climb to 9000 direct HOKEG, and on track 159° to FFU VORTAC and hold, thence. . . .

TAKEOFF RUNWAY 34: Climb heading 338° to 5107, then climb to 9000 direct CELOD, and right turn direct FFU VORTAC and hold, thence. . . .

. . . maintain 9000. Expect further clearance to filed altitude and route within 10 minutes after departure.

SW-4, 20 FEB 2025 to 20 MAR 2025

SW-4, 20 FEB 2025 to 20 MAR 2025