

HI-VOR Z or TACAN RWY 21

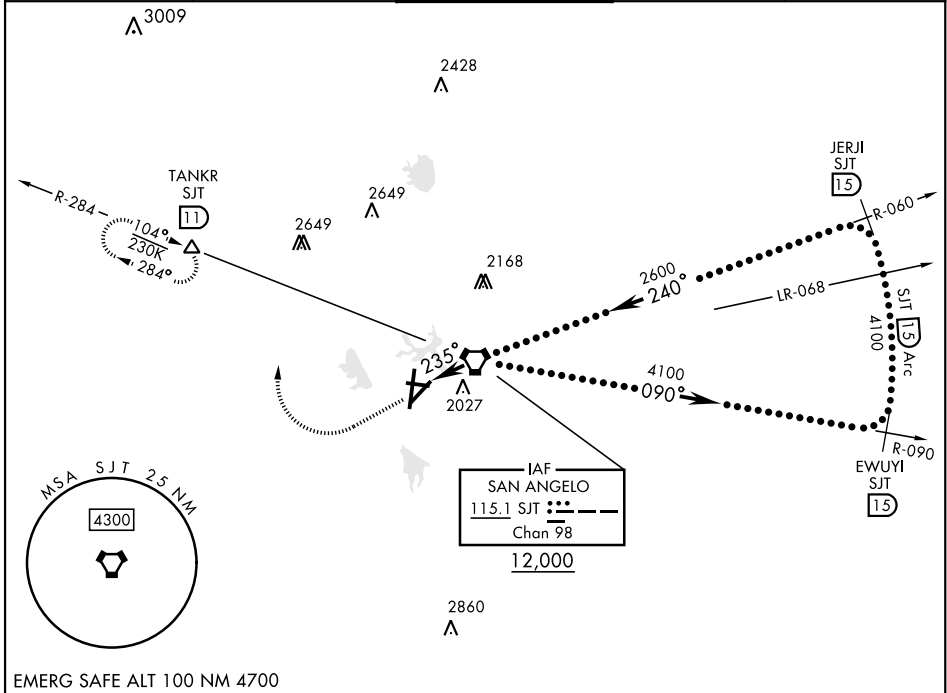
VORTAC SJT 115.1 Chan 98	APCH CRS 235°	Rwy ldg TDZE Arpt Elev 5940 1906 1919
--	-------------------------	---

[USAF] SAN ANGELO RGNL/MATHIS FLD (KSJT)

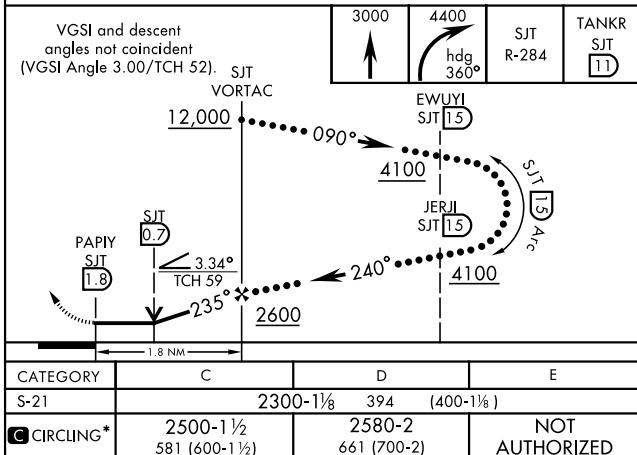
DME required
*Circling not authorized for CAT D W of Rwy 18-36.

MISSED APPROACH: Climb to 3000 then climbing right turn to 4400 on heading 360° and SJT VORTAC R-284 to TANKR INT/11 DME and hold, continue climb-in-hold to 4400.

ATIS 128.45 319.0	SAN ANGELO APP CON ★ 125.35 354.1	MATHIS TOWER ★ 118.3 (CTAF) 284.7	GND CON 121.9 348.6	UNICOM 122.95
-----------------------------	---	--	-------------------------------	-------------------------



EMERG SAFE ALT 100 NM 4700



SAN ANGELO, TEXAS 31°21'N-100°30'W SAN ANGELO RGNL/MATHIS FLD (KSJT)

Amtd 2 02DEC21

HI-VOR Z or TACAN RWY 21

SC-3, 20 FEB 2025 to 20 MAR 2025

SC-3, 20 FEB 2025 to 20 MAR 2025