

LOC/DME I-SJT 109.7 Chan 34	APP CRS 038°	Rwy Idg 5940 TDZE 1917 Apt Elev 1919
---	------------------------	---

ILS Y or LOC Y RWY 3

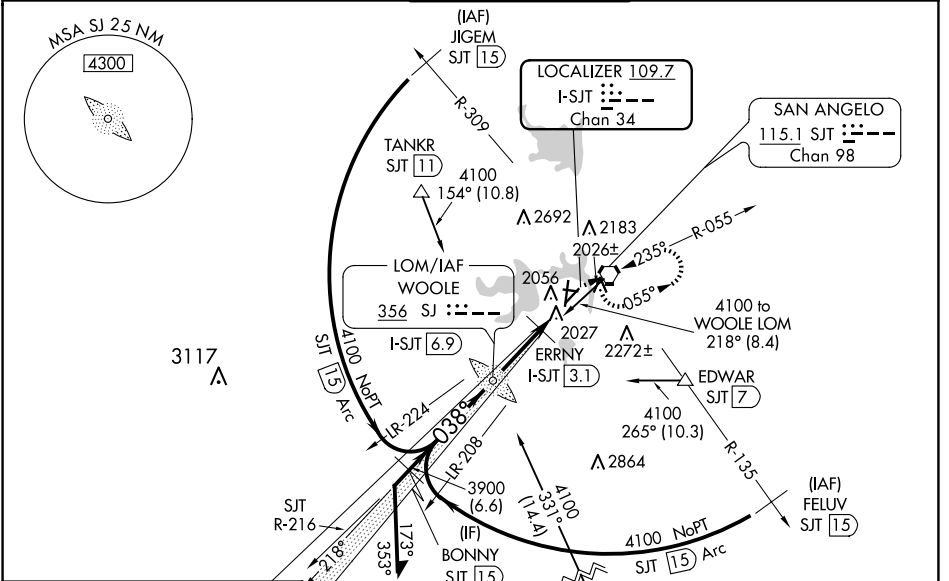
SAN ANGELO RGNL/MATHIS FLD (SJT)

ADF or DME required for procedure entry.

ASR Autopilot coupled approach NA below 2685. For inop ALS, increase S-ILS 3 Cat E visibility to RVR 4000, S-LOC 3 Cat C/D/E visibility to 2 SM. Circling NA for Cat E west of Rwy 18-36. ERRNY DME minimums: For Inop ALS, increase S-LOC 3 Cat C/D/E visibility to RVR 5500.
RVR 1800 authorized with use of FD or AP or HUD to DA.

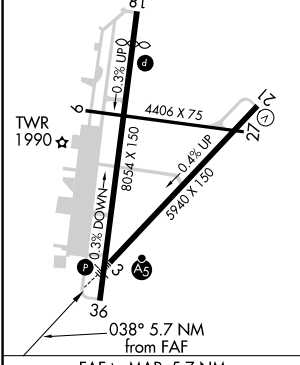
MALSR MISSED APPROACH: Climb to 4000 then right turn direct SJT VORTAC and hold.

ATIS 128.45 319.0	SAN ANGELO APP CON * 125.35 354.1	MATHIS TOWER * 118.3 (CTAF) 284.7	GND CON 121.9 348.6	UNICOM 122.95
-----------------------------	---	---	-------------------------------	-------------------------

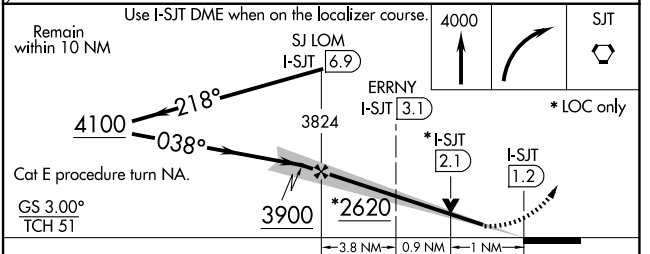


ELEV 1919	D TDZE 1917
-----------	--------------------

MIRL Rwy 9-27 and 18-36
HIRL Rwy 3-21
REIL Rwy 18



Knots	60	90	120	150	180
Min:Sec	5:42	3:48	2:51	2:17	1:54



CATEGORY	A	B	C	D	E
S-ILS 3 #	2117/24 200 (200-1/2)				
S-LOC 3	2620/24	703 (800-1/2)	2620-1 7/8	703 (800-1 1/8)	
C CIRCLING	2620-1	701 (800-1)	2620-2 701 (800-2)	2700-2 1/2 781 (800-2 1/2)	2700-2 3/4 781 (800-2 3/4)
ERRNY DME MINIMUMS					
S-LOC 3	2300/24	383 (400-1/2)	2300/35	383 (400-5/8)	
C CIRCLING	2360-1 441 (500-1)	2380-1 461 (500-1)	2500-1 1/2 581 (600-1 1/2)	2700-2 1/2 781 (800-2 1/2)	2700-2 3/4 781 (800-2 3/4)

SC-3, 20 FEB 2025 to 20 MAR 2025

SC-3, 20 FEB 2025 to 20 MAR 2025