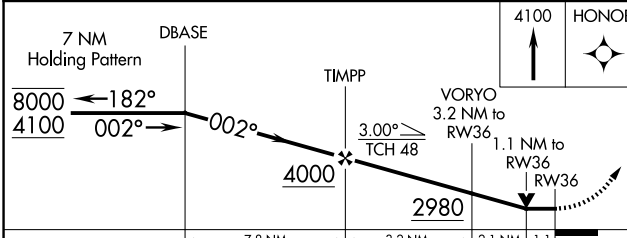
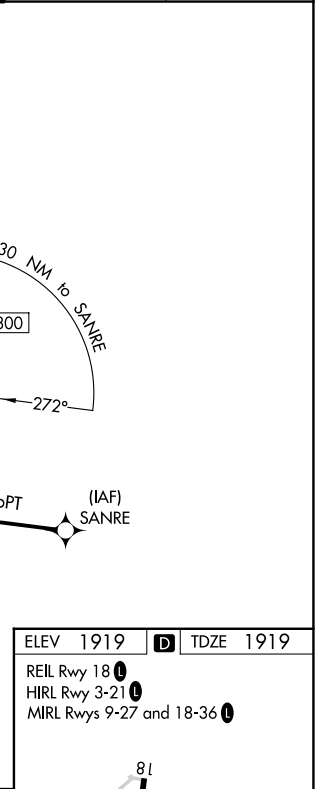
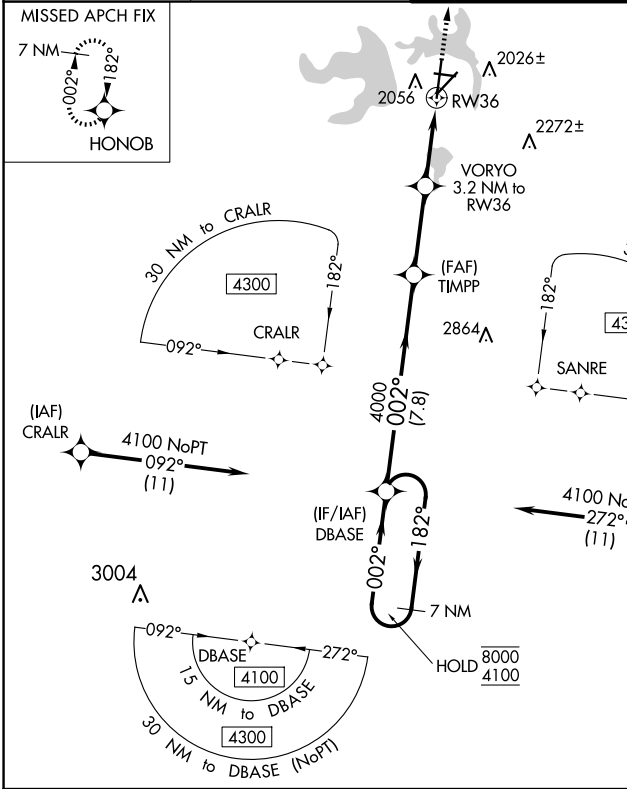


APP CRS	Rwy ldg	7152
002°	TDZE	1919
	Apt Elev	1919

RNAV (GPS) RWY 36

SAN ANGELO RGNL/MATHIS FLD (SJT)

RNP APCH - GPS.		MISSED APPROACH: Climb to 4100 direct HONOB and hold.				
<p>▽ Circling NA for Cat E west of Rwy 18-36. ▲ Rwy 36 helicopter visibility reduction below 3/4 SM NA.</p>		<p>ATIS 128.45 319.0</p>	<p>SAN ANGELO APP CON ★ 125.35 354.1</p>	<p>MATHIS TOWER ★ 118.3 (CTAF) 284.7</p>	<p>GND CON 121.9 348.6</p>	<p>UNICOM 122.95</p>



ELEV	1919	D	TDZE	1919
REIL Rwy 18	①			
HIRL Rwy 3-21	①			
MIRL Rwy 9-27 and 18-36	①			

CATEGORY	A	B	C	D	E
LNAV MDA	2320-1	401 (500-1)	2320-1 1/8	401 (500-1 1/8)	
C CIRCLING	2360-1 441 (500-1)	2380-1 461 (500-1)	2500-1 1/2 581 (600-1 1/2)	2700-2 1/2 781 (800-2 1/2)	2700-2 3/4 781 (800-2 3/4)

SC-3, 20 FEB 2025 to 20 MAR 2025

SC-3, 20 FEB 2025 to 20 MAR 2025