

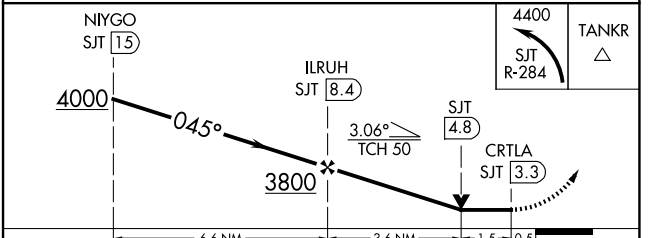
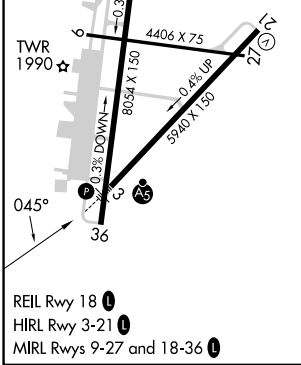
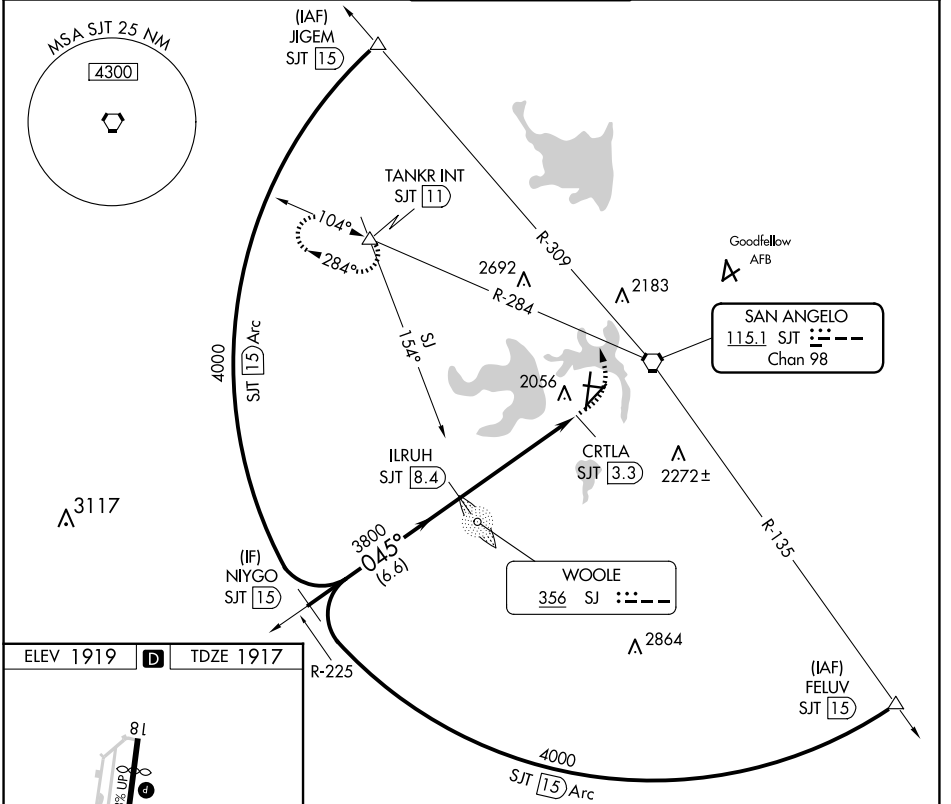
VORTAC SJT 115.1 Chan 98	APP CRS 045°	Rwy Idg TDZE Apt Elev	5940 1917 1919
----------------------------------------------	------------------------	-----------------------------	-------------------------------------------

VOR Y or TACAN Y RWY 3

SAN ANGELO RGNL/MATHIS FLD (SJT)

DME required.	MALS R	MISSED APPROACH: Climbing left turn to 4400 on SJT VORTAC R-284 to TANKR INT/11 DME and hold, continue climb-in-hold to 4400.
<p>▼ Inop table does not apply to Cat A and B.</p> <p>▲ Circling NA for Cat E west of Rwy 18-36.</p> <p>▲ For inop ALS, increase Cat C-E visibility to 2 SM.</p>		

ATIS 128.45 319.0	SAN ANGELO APP CON ★ 125.35 354.1	MATHIS TOWER ★ 118.3 (CTAF) 284.7	GND CON 121.9 348.6	UNICOM 122.95
-----------------------------	---------------------------------------------	---------------------------------------------	-------------------------------	-------------------------



CATEGORY	A	B	C	D	E
S-3	2620/50	703 (800-1)	2620-1½	703 (800-1½)	
C CIRCLING	2620-1	701 (800-1)	2620-2 701 (800-2)	2700-2½ 781 (800-2½)	2700-2¾ 781 (800-2¾)

SC-3, 20 FEB 2025 to 20 MAR 2025

SC-3, 20 FEB 2025 to 20 MAR 2025