

ALAMO FOUR DEPARTURE

**TOP ALTITUDE:
5000**

RADAR required.

SAN ANTONIO DEP CON
125.1 307.0 (Rwys 04/22/31)
127.1 269.1 (Rwy 13)
D-ATIS
118.9
CLNC DEL
126.7
CPDLC
GND CON
121.9 348.6
SAN ANTONIO TOWER
119.8 257.8

TAKEOFF MINIMUMS

Rwys 4, 13L/R, 22, 31L/R: Standard.

COWBOY
116.2 CVE
Chan 109

BROWNWOOD
113.55 BWD
Chan 82 (Y)

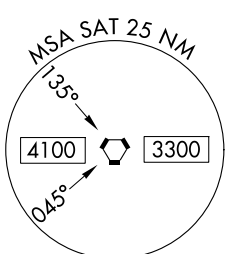
GOOCH SPRINGS
112.5 AGJ
Chan 72

STONEWALL
113.8 STV
Chan 85

CENTEX
112.8 CWK
Chan 75

SAN ANTONIO
116.8 SAT
Chan 115

NOTE: GOBBY Transition: Right turn at GOBBY NA for ACFT REQ FL240 and ABV.
NOTE: HENLY Transition: Right turn at HENLY NA for ACFT REQ FL240 and ABV.



(CONTINUED ON FOLLOWING PAGE)

NOTE: Chart not to scale.

ALAMO FOUR DEPARTURE

SC-3, 20 FEB 2025 to 20 MAR 2025

SC-3, 20 FEB 2025 to 20 MAR 2025

ALAMO FOUR DEPARTURE



DEPARTURE ROUTE DESCRIPTION

TAKEOFF ALL RUNWAYS: Climb on assigned heading for RADAR vectors to SAT VORTAC, then on transition/route. Maintain 5000. Expect filed altitude 10 minutes after departure.

GOBBY TRANSITION (ALAMO4.GOBBY): From over SAT VORTAC on SAT R-002 to GOBBY.

GOOCH SPRINGS TRANSITION (ALAMO4.AGJ): From over SAT VORTAC on SAT R-002 to GOBBY, then on SAT R-002 and AGJ R-185 to AGJ VORTAC.

HENLY TRANSITION (ALAMO4.HENLY): From over SAT VORTAC on SAT R-359 to HENLY.

JUMBO TRANSITION (ALAMO4.JUMBO): From over SAT VORTAC on SAT R-359 to JUMBO.

SC-3, 20 FEB 2025 to 20 MAR 2025

SC-3, 20 FEB 2025 to 20 MAR 2025