

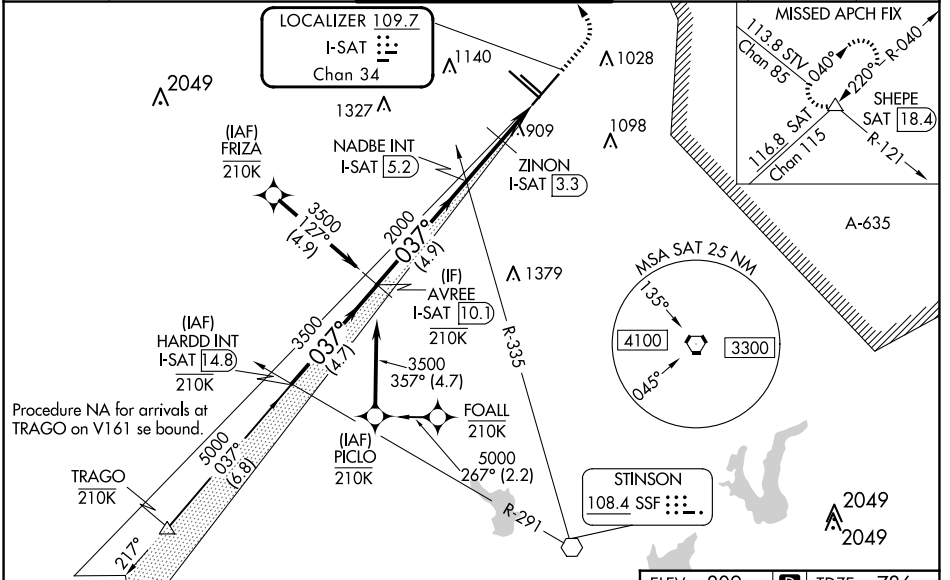
LOC/DME I-SAT 109.7 Chan 34	APP CRS 037°	Rwy ldg 8505 TDZE 786 Apt Elev 809
---	------------------------	---

ILS or LOC RWY 4

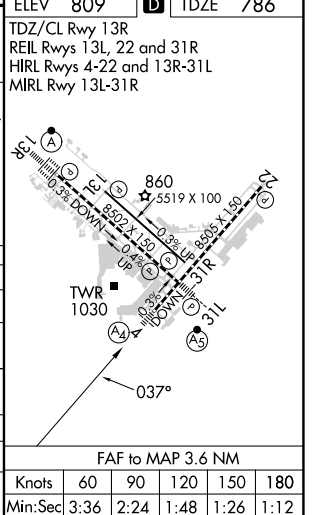
SAN ANTONIO INTL (SAT)

RNP APCH-GPS. From TRAGO or PICLO or FRIZA.		MALS 	MISSED APPROACH: Climb to 1700 then climbing left turn to 3500 on heading 025° and on SAT VORTAC R-040 to SHEPE INT/SAT 18.4 DME and hold.
Aircraft not GPS equipped - RADAR required for procedure entry.			
⚠ NA Circling NA northwest of Rws 4 and 13R. Autopilot coupled approach NA below 1189. Inop table does not apply to S-ILS 4. For inop ALS, increase S-LOC 4 Cat C/D visibility to RVR 6000.			

D-ATIS 118.9	SAN ANTONIO APP CON 125.1 307.0	SAN ANTONIO TOWER 119.8 257.8	GND CON 121.9 348.6	CLNC DEL 126.7	CPDLC
------------------------	---	---	-------------------------------	--------------------------	-------



VGSIs and ILS glidepath not coincident (VGSIs Angle 3.00/TCH 79). HARDD INT I-SAT 14.8 AVREE I-SAT 10.1 5000 037° 3500 GS 3.00° TCH 56	NADBE INT I-SAT 5.2 1700 3500 hdg 025°	ZINON I-SAT 3.3 2000 1200 See planview for multiple IF locations.	SHEPE R-040 △	
				4.7 NM 4.9 NM 1.9 NM 0.9 NM 0.8 NM
CATEGORY	A	B	C	D
S-ILS 4	986/40		200 (200-¾)	
S-LOC 4	1200/40	414 (400-¾)	1200/50	414 (400-1)
Ⓢ CIRCLING	1280-1 471 (500-1)	1340-1 531 (600-1)	1420-1¾ 611 (700-1¾)	1520-2¼ 711 (800-2¼)
ZINON FIX MINIMUMS (DME REQUIRED)				
S-LOC 4	1120/40		334 (400-¾)	
Ⓢ CIRCLING	1280-1 471 (500-1)	1340-1 531 (600-1)	1420-1¾ 611 (700-1¾)	1520-2¼ 711 (800-2¼)



SC-3, 20 FEB 2025 to 20 MAR 2025

SC-3, 20 FEB 2025 to 20 MAR 2025