

APP CRS	Rwy Idg	8505
217°	TDZE	770
	Apt Elev	809

RNAV (RNP) Z RWY 22

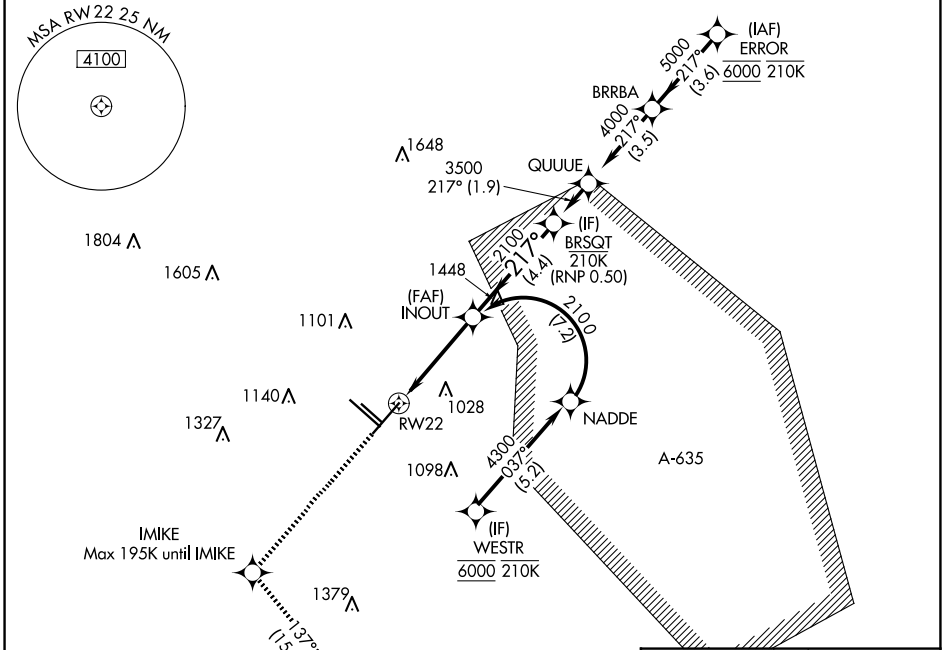
SAN ANTONIO INTL (SAT)

RNP AR APCH - GPS. Authorization required.
From BRSQT: Min RNP 0.50. From NADDE: RF.

MISSED APPROACH: (Do not exceed 195K until IMIKE) Climb to 3100 direct IMIKE and on track 137° to EMBOW and hold.

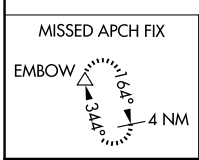
▼ For uncompensated Baro-VNAV systems, procedure NA below -5°C or above 54°C.

D-ATIS	SAN ANTONIO APP CON	SAN ANTONIO TOWER	GND CON	CLNC DEL	CPDLC
118.9	125.1 307.0	119.8 257.8	121.9 348.6	126.7	

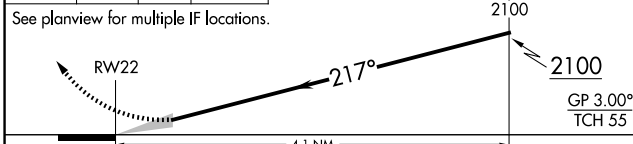


SC-3, 20 FEB 2025 to 20 MAR 2025

SC-3, 20 FEB 2025 to 20 MAR 2025



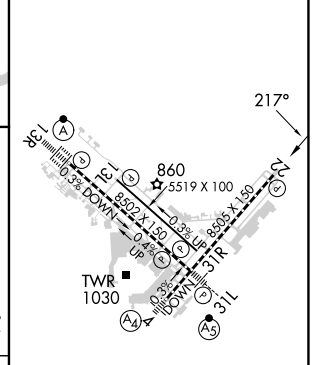
3100	IMIKE	EMBOW	VGSI and RNAV glidepath not coincident (VGSI Angle 3.00/TCH 85).
↑	✧	tr 137°	



CATEGORY	A	B	C	D
RNP 0.15 DA		1068-7/8	298 (300-7/8)	
RNP 0.30 DA		1220-13/8	450 (500-13/8)	

AUTHORIZATION REQUIRED

ELEV	809	D	TDZE	770
------	-----	---	------	-----



TDZ/CL Rwy 13R
REIL Rwys 13L, 22 and 31R
HIRL Rwys 4-22 and 13R-31L
MIRL Rwy 13L-31R