

RNAV (RNP) Z RWY 31L


SAN ANTONIO INTL (SAT)

APP CRS	Rwy Idg	8502
308°	TDZE	790
	Apt Elev	809

RNP AR APCH - GPS.

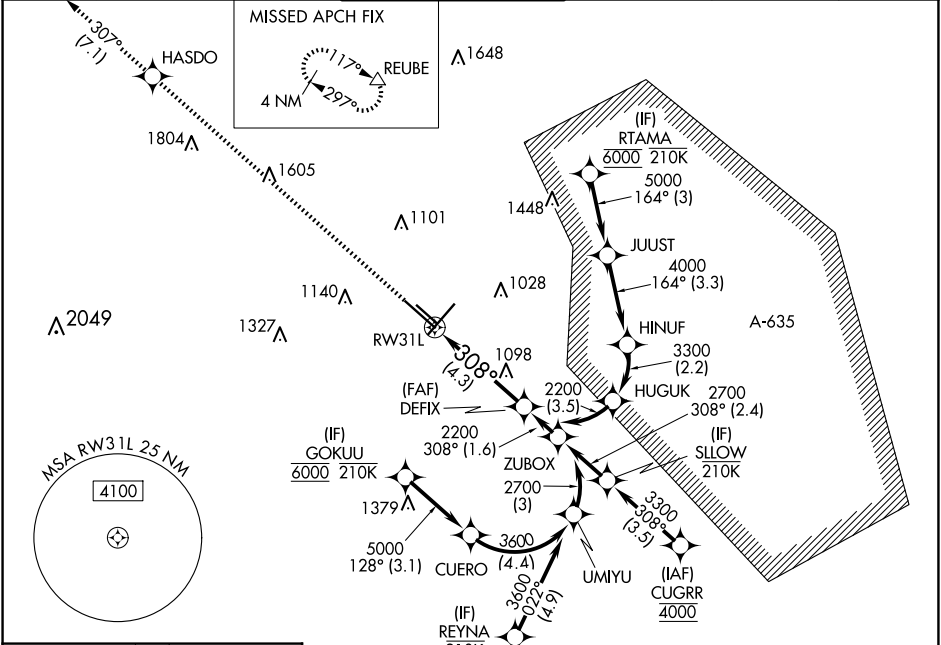
▼ For uncompensated Baro-VNAV systems, procedure NA below -5°C or above 54°C. For inop ALS, increase RNP 0.15 all Cats visibility to RVR 5500, increase RNP 0.30 all Cats visibility to RVR 6000.

MALSR



MISSED APPROACH: Climb to 4200 direct HASDO and track 307° to REUBE and hold.

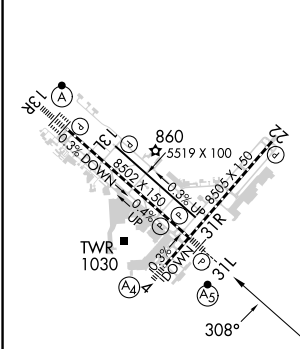
D-ATIS	SAN ANTONIO APP CON	SAN ANTONIO TOWER	GND CON	CLNC DEL	CPDLC
118.9	125.1 307.0	119.8 257.8	121.9 348.6	126.7	



SC-3, 20 FEB 2025 to 20 MAR 2025

SC-3, 20 FEB 2025 to 20 MAR 2025

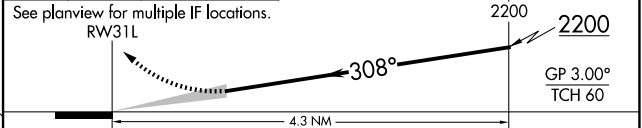
ELEV	809	D	TDZE	790
------	------------	---	------	------------



TDZ/CL Rwy 13R
REIL Rwy 13L, 22 and 31R
HIRL Rwy 4-22 and 13R-31L
MIRL Rwy 13L-31R



4200	HASDO	REUBE	VGSI and RNAV glidepath not coincident (VGSI Angle 3.00°/TCH 82).
↑			
	tr 307°	△	



CATEGORY	A	B	C	D
RNP 0.15 DA		1144/30	354 (400-¾)	
RNP 0.30 DA		1200/40	410 (400-¾)	

AUTHORIZATION REQUIRED