

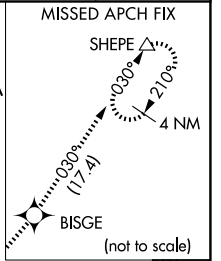
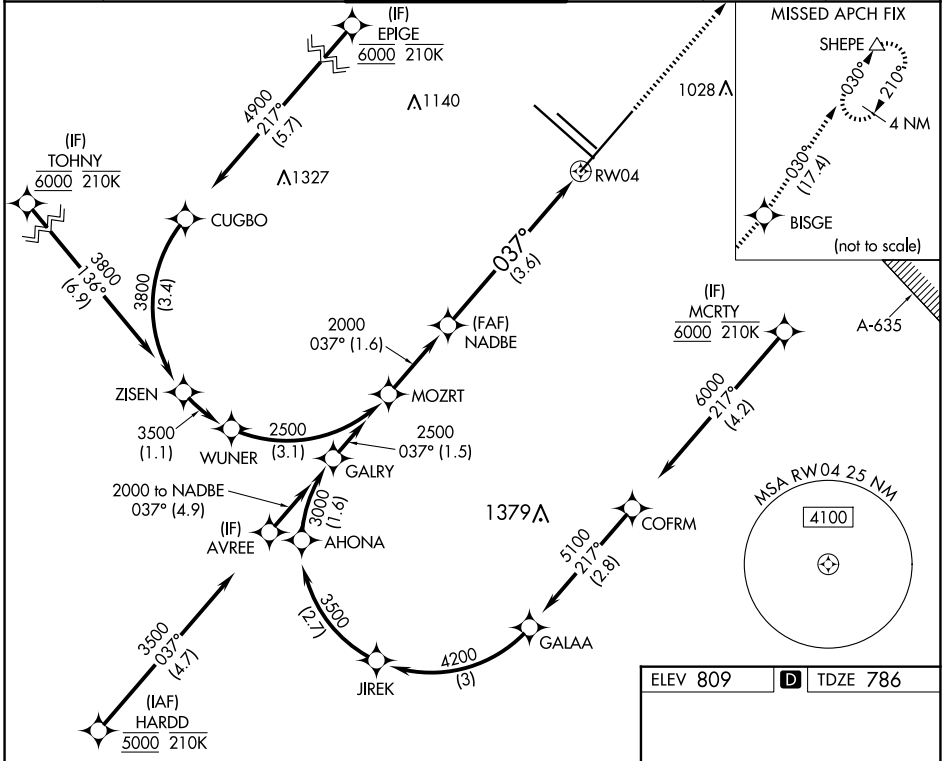
APP CRS 037°	Rwy Idg 8505
	TDZE 786
	Apt Elev 809

RNAV (RNP) Z RWY 4

SAN ANTONIO INTL (SAT)

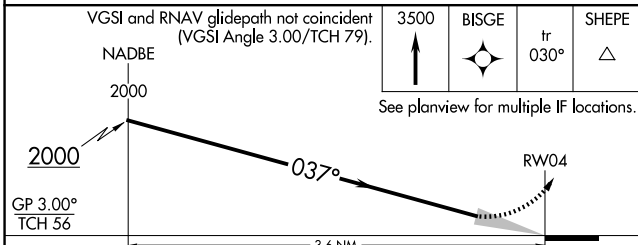
RNP AR APCH - GPS.	MALS 	MISSED APPROACH: Climb to 3500 direct BISGE and track 030° to SHEPE and hold.
For uncompensated Baro-VNAV systems, procedure NA below -5°C or above 54°C.		

D-ATIS 118.9	SAN ANTONIO APP CON 125.1 307.0	SAN ANTONIO TOWER 119.8 257.8	GND CON 121.9 348.6	CLNC DEL 126.7	CPDLC
------------------------	---	---	-------------------------------	--------------------------	-------



SC-3, 20 FEB 2025 to 20 MAR 2025

SC-3, 20 FEB 2025 to 20 MAR 2025



GP 3.00° TCH 56	See planview for multiple IF locations.			
CATEGORY	A	B	C	D
RNP 0.15 DA		1167/45	381 (400-¾)	
RNP 0.30 DA		1286/60	500 (500-1¼)	
AUTHORIZATION REQUIRED				

