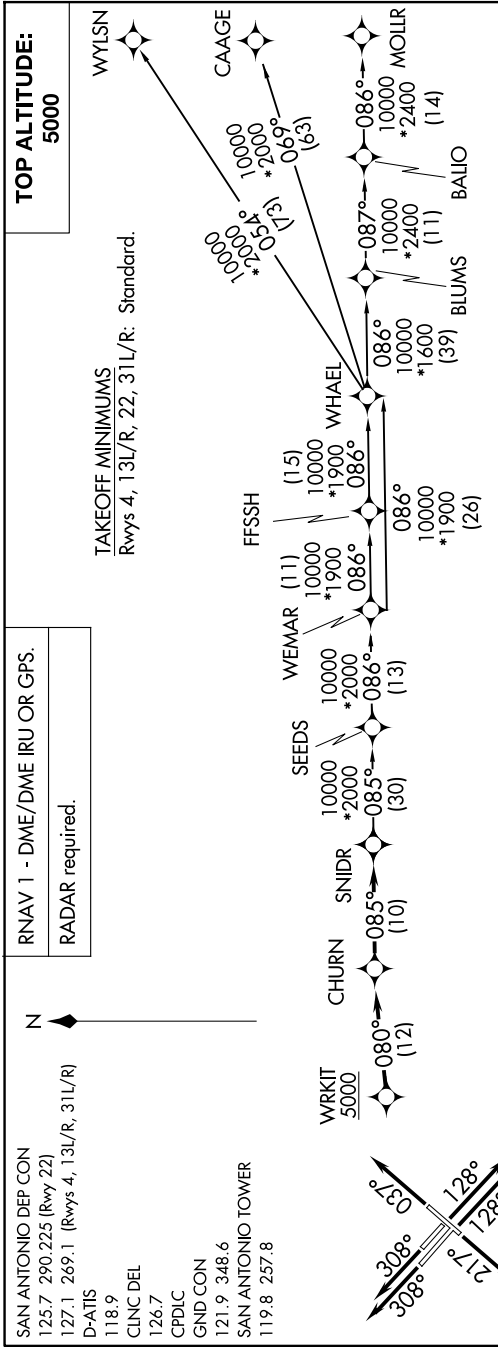


# SNIDR ONE DEPARTURE (RNAV)

SC-3, 20 FEB 2025 to 20 MAR 2025



**DEPARTURE ROUTE DESCRIPTION**

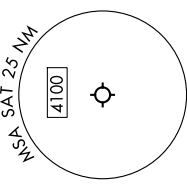
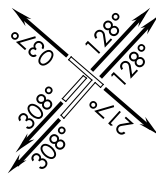
TAKEOFF RUNWAY 4: Climb on heading 037° or as assigned by ATC, for vectors to WRKIT, thence. . . .  
 TAKEOFF RUNWAY 13L/R: Climb on heading 128° or as assigned by ATC, for vectors to WRKIT, thence. . . .  
 TAKEOFF RUNWAY 22: Climb on heading 217° or as assigned by ATC, for vectors to WRKIT, thence. . . .  
 TAKEOFF RUNWAY 31L/R: Climb on heading 308° or as assigned by ATC, for vectors to WRKIT, thence. . . .

. . . on track 080° to CHURN, then on track 085° to SNIDR, then on transition. Maintain 5000.

BLUMS TRANSITION (SNIDR1.BLUMS)  
 CAAGE TRANSITION (SNIDR1.CAAGE)  
 FFSSH TRANSITION (SNIDR1.FFSSH)  
 MOLLR TRANSITION (SNIDR1.MOLLR)  
 SEEDS TRANSITION (SNIDR1.SEEDS)  
 WEMAR TRANSITION (SNIDR1.WEMAR)  
 WHAEL TRANSITION (SNIDR1.WHAEL)  
 WYLSN TRANSITION (SNIDR1.WYLSN)

SAN ANTONIO DEP CON  
 125.7 290.225 (Rwy 22)  
 127.1 269.1 (Rwys 4, 13L/R, 31L/R)

D-ATIS  
 118.9  
 CLNC DEL  
 126.7  
 CPDLC  
 GND CON  
 121.9 348.6  
 SAN ANTONIO TOWER  
 119.8 257.8



Note: Chart not to scale.

SC-3, 20 FEB 2025 to 20 MAR 2025