

SAN ANTONIO, TEXAS

ILS or LOC/DME Y RWY 16

LOC I-SKF 110.1	APCH CRS 158°	Rwy ldg 11,550 TDZE 690 Arprt Elev 690
---------------------------	-------------------------	---

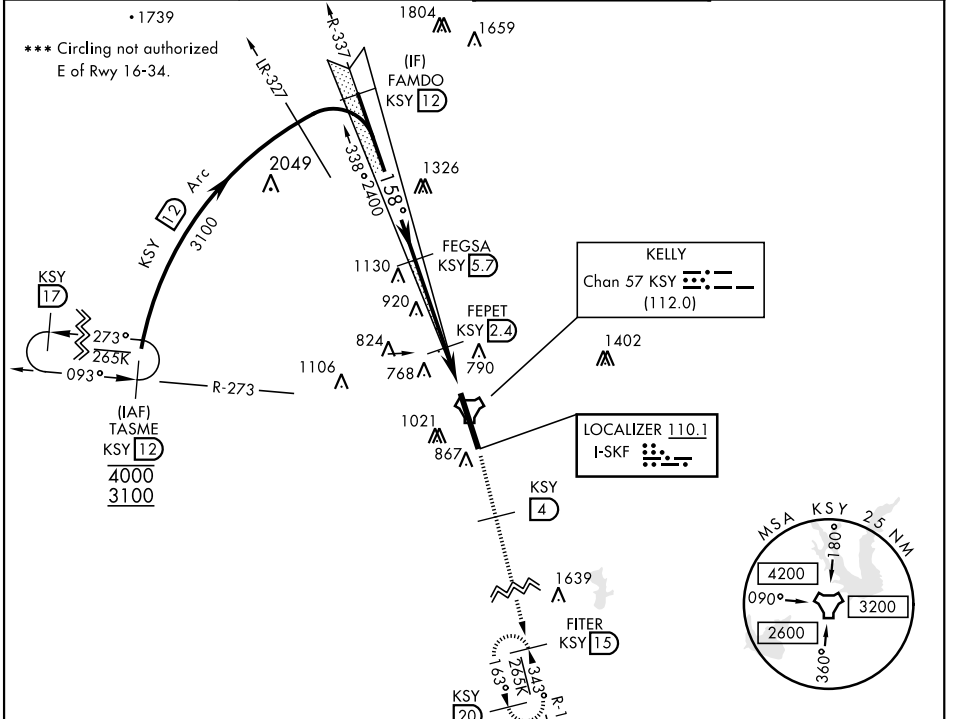
AL-371 [USAF]

KELLY FLD (KSKF)

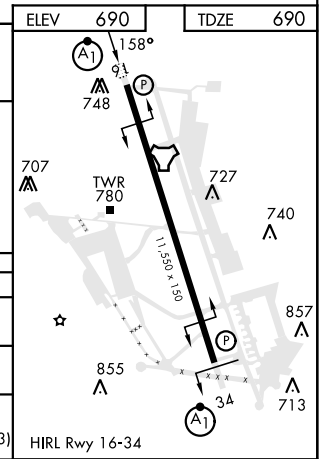
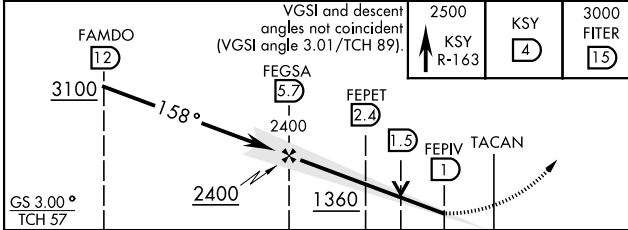
*When ALS inop, increase RVR to 40 and vis to 3/4 mile.
 **When ALS inop, increase CAT AB RVR to 55 and vis to 1 mile, CAT CDE RVR to 60 and vis to 1 1/8 miles.

ALSF-1 MISSED APPROACH: Climb to 2500 via KSY R-163 until 4 DME, then continue climb to 3000 to FITER/1.5 DME and hold. Non-TACAN equipped aircraft expect alternate missed approach instructions.

ATIS 120.45 273.5	SAN ANTONIO APP CON 118.05 353.5	TOWER 124.3 322.35	GND CON 121.8 289.4
-----------------------------	--	------------------------------	-------------------------------



EMERG SAFE ALT 100 NM 4200



CATEGORY	A	B	C	D	E
S-ILS 16*	890/24		200	(200-1/2)	
S-LOC/DME 16**	1080/24	390 (400-1/2)	1080/35	390	(400-5/8)
CIRCLING ***	1200-1 510 (600-1)	1280-1 590 (600-1)	1340-1 3/4 650 (700-1 3/4)	1400-2 1/4 710 (800-2 1/4)	1900-3 1210 (1300-3)

SAN ANTONIO, TEXAS

29° 23' N-98° 35' W

KELLY FLD (KSKF)

Amrd 2 29DEC22

ILS or LOC/DME Y RWY 16

SC-3, 20 FEB 2025 to 20 MAR 2025

SC-3, 20 FEB 2025 to 20 MAR 2025