

SAN ANTONIO, TEXAS

RNAV (GPS) RWY 16

WAAS CH 52296 W16A	APCH CRS 158°	Rwy ldg TDZE Arprt Elev	11,550 690 690
--------------------------	------------------	----------------------------	----------------------

AL-371 (USAF)

KELLY FLD (KSKF)

RNP APCH

▼ * When ALS inop, increase RVR to 40, vis to 3/4 miles.
 ** When ALS inop, increase RVR to 60, vis to 1 1/8 miles.

ALS-1

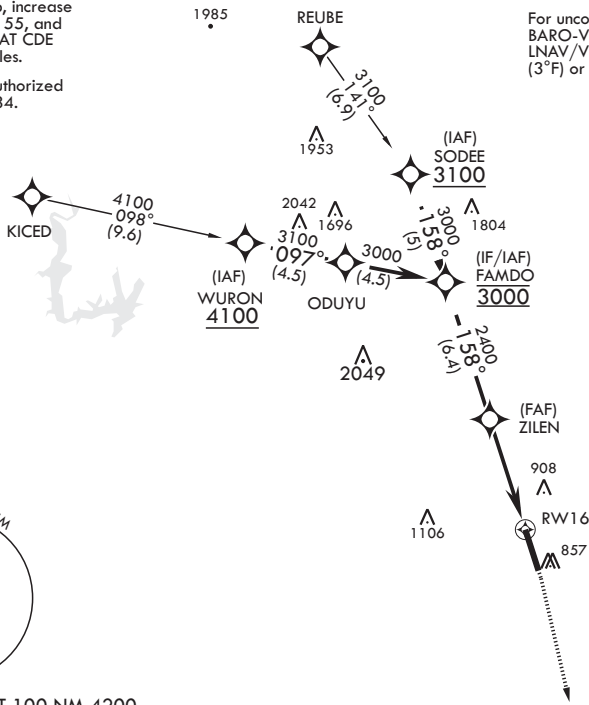
MISSED APPROACH: Climb to 1500 then climbing right turn to 3000 direct FITER and hold.

ATIS 120.45 273.5	SAN ANTONIO APP CON 118.05 353.5	KELLY TOWER 124.3 322.35	GND CON 121.8 289.4
----------------------	-------------------------------------	-----------------------------	------------------------

*** When ALS inop, increase CAT AB RVR to 55, and vis to 1 mile; CAT CDE vis to 1 7/8 miles.

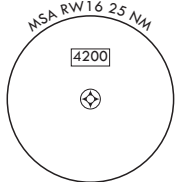
**** Circling not authorized E of Rwy 16-34.

For uncompensated BARO-VNAV systems, LNAV/VNAV NA below -16°C (3°F) or above 54°C (129°F).

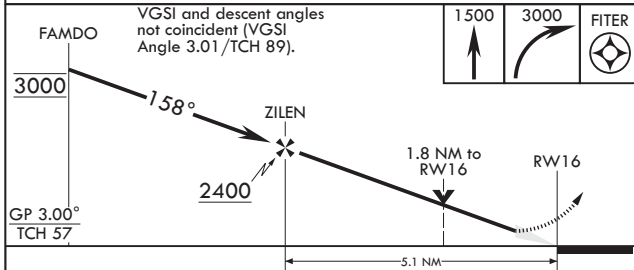


SC-3, 20 FEB 2025 to 20 MAR 2025

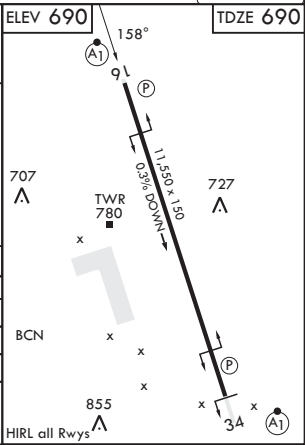
SC-3, 20 FEB 2025 to 20 MAR 2025



EMERG SAFE ALT 100 NM 4200



CATEGORY	A	B	C	D	E
LPV DA*	890/24		200	(200-1/2)	
LNAV/VNAV DA**	1080/35		390	(400-5/8)	
LNAV MDA***	1360/24 670 (700-1/2)		1360-1 1/2	670 (700-1 1/2)	
☐ CIRCLING****	1360-1 670 (700-1)		1360-1 1/8 (700-1 1/8)	1400-2 1/4 (800-2 1/4)	1900-3 (1300-3)



SAN ANTONIO, TEXAS
Amdt 2 23FEB23

29°23'N - 98°35'W

KELLY FLD (KSKF)

RNAV (GPS) RWY 16