

ALAMO FOUR DEPARTURE

RADAR required.

**TOP ALTITUDE:
ASSIGNED BY ATC**

SAN ANTONIO DEP CON
125.7 290.225
ATIS
128.8
CLNC DEL (When twr closed)
121.7
GND CON
121.7 379.9
STINSON TOWER *
118.2 379.9

TAKEOFF MINIMUMS

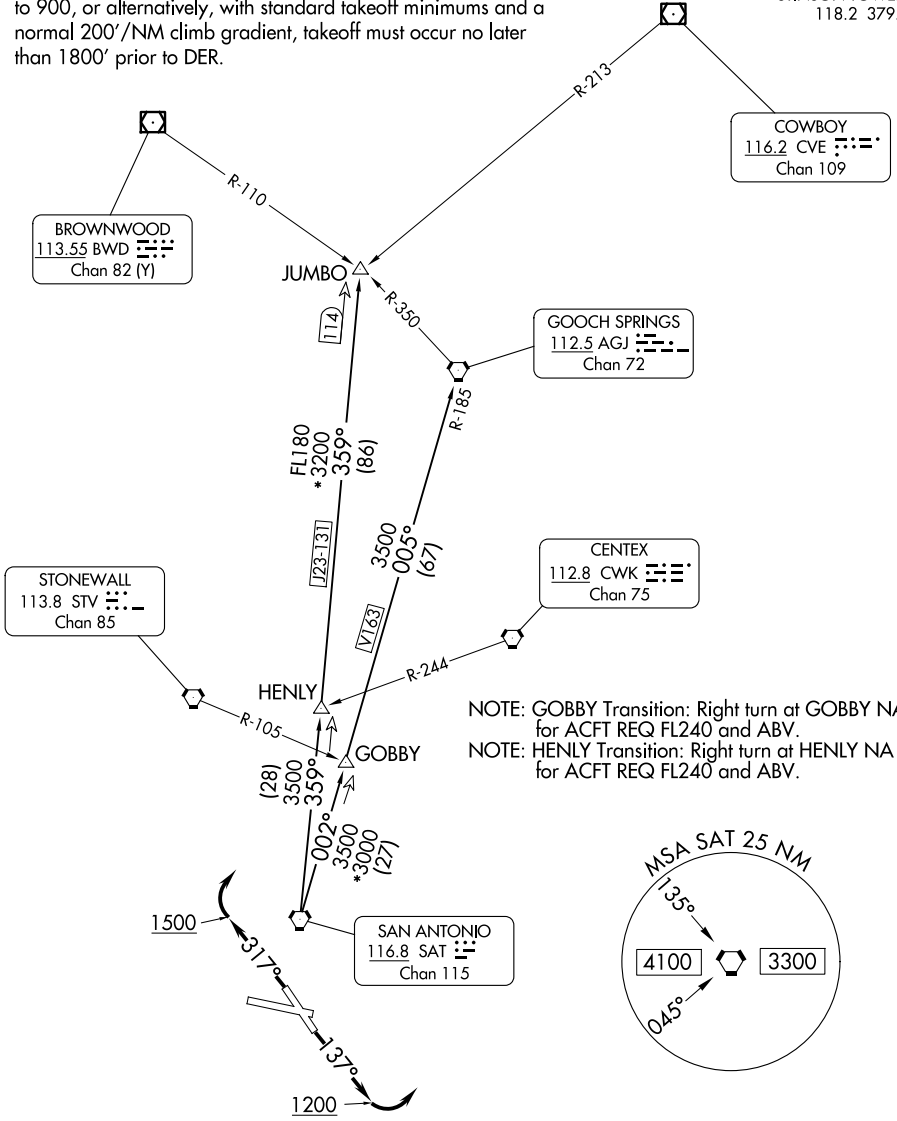
Rwy 14, 32: Standard.

Rwy 9: Standard with minimum climb of 230'/NM to 1900.

Rwy 27: 300-1½ or standard with minimum climb of 225'/NM to 900, or alternatively, with standard takeoff minimums and a normal 200'/NM climb gradient, takeoff must occur no later than 1800' prior to DER.

SC-3, 20 FEB 2025 to 20 MAR 2025

SC-3, 20 FEB 2025 to 20 MAR 2025



NOTE: GOBBY Transition: Right turn at GOBBY NA for ACFT REQ FL240 and ABV.
NOTE: HENLY Transition: Right turn at HENLY NA for ACFT REQ FL240 and ABV.

(CONTINUED ON FOLLOWING PAGE)

NOTE: Chart not to scale

ALAMO FOUR DEPARTURE

ALAMO FOUR DEPARTURE



DEPARTURE ROUTE DESCRIPTION

TAKEOFF RUNWAYS 9, 27: Climb on assigned heading for RADAR vectors to SAT VORTAC, thence...

TAKEOFF RUNWAY 14: Climb on heading 137° to 1200 before turning left for RADAR vectors to SAT VORTAC, thence...

TAKEOFF RUNWAY 32: Climb on heading 317° to 1500 before turning right for RADAR vectors to SAT VORTAC, thence...

...on transition/route. Maintain ATC assigned altitude. Expect filed altitude 10 minutes after departure.

GOBBY TRANSITION (ALAMO4.GOBBY): From over SAT VORTAC on SAT R-002 to GOBBY.

GOOCH SPRINGS TRANSITION (ALAMO4.AGJ): From over SAT VORTAC on SAT R-002 to GOBBY, then on SAT R-002 and AGJ R-185 to AGJ VORTAC.

HENLY TRANSITION (ALAMO4.HENLY): From over SAT VORTAC on SAT R-359 to HENLY.

JUMBO TRANSITION (ALAMO4.JUMBO): From over SAT VORTAC on SAT R-359 to JUMBO.

SC-3, 20 FEB 2025 to 20 MAR 2025

SC-3, 20 FEB 2025 to 20 MAR 2025