

BOWIE SEVEN DEPARTURE

ATIS
 128.8
 CLNC DEL (When twr closed)
 121.7
 GND CON
 121.7 379.9
 SAN ANTONIO DEP CON
 125.7 290.225
 STINSON TOWER*
 118.2 379.9

SAN ANTONIO
 116.8 SAT
 Chan 115

COTULLA
 115.8 COT
 Chan 105

THREE RIVERS
 111.4 THX
 Chan 51

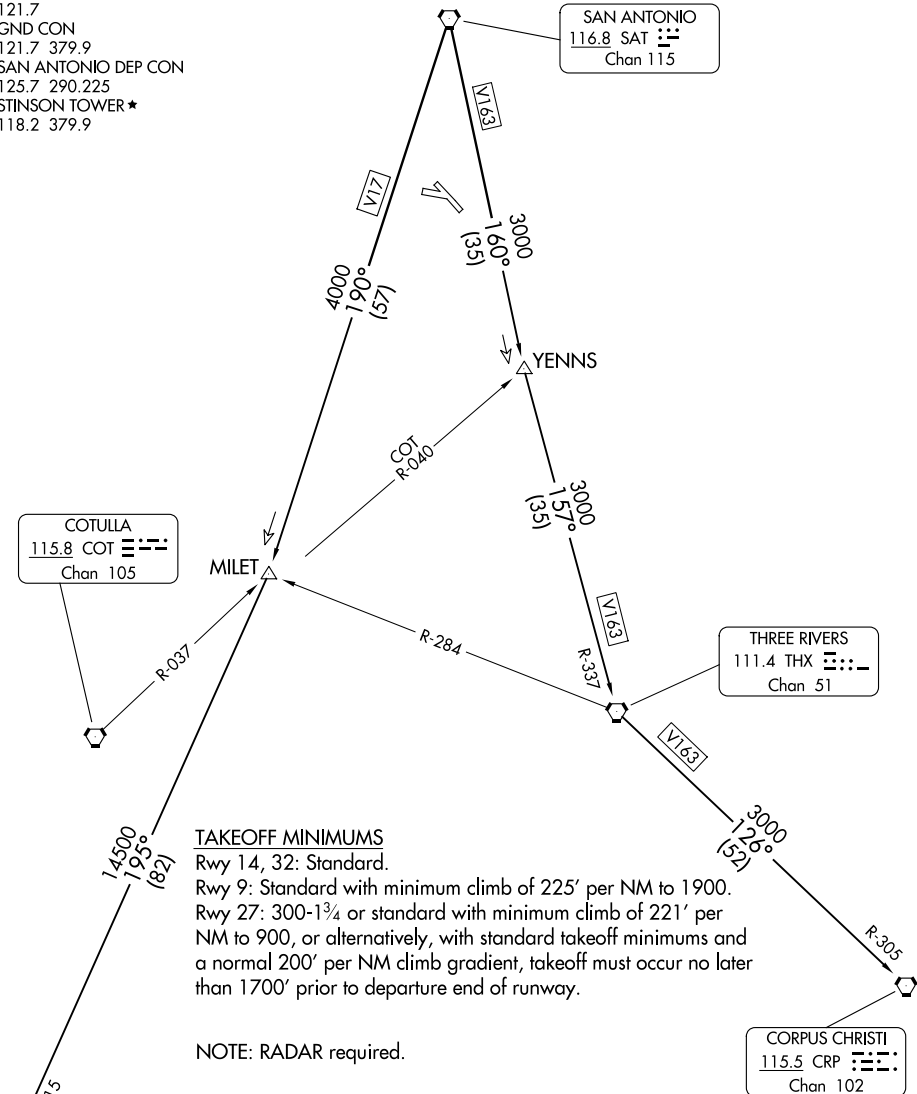
CORPUS CHRISTI
 115.5 CRP
 Chan 102

LAREDO
 117.4 LRD
 Chan 121

TAKEOFF MINIMUMS

Rwy 14, 32: Standard.
 Rwy 9: Standard with minimum climb of 225' per NM to 1900.
 Rwy 27: 300-1³/₄ or standard with minimum climb of 221' per NM to 900, or alternatively, with standard takeoff minimums and a normal 200' per NM climb gradient, takeoff must occur no later than 1700' prior to departure end of runway.

NOTE: RADAR required.



SC-3, 20 FEB 2025 to 20 MAR 2025

SC-3, 20 FEB 2025 to 20 MAR 2025

NOTE: Chart not to scale

(CONTINUED ON FOLLOWING PAGE)

BOWIE SEVEN DEPARTURE

BOWIE SEVEN DEPARTURE



DEPARTURE ROUTE DESCRIPTION

TAKEOFF RWYS 9, 14, 27, 32: Climb on assigned heading and altitude for RADAR vectors to SAT VORTAC, thence. . . .

. . . .on transition/route. Expect filed altitude 10 minutes after departure.

CORPUS CHRISTI TRANSITION (BOWIE7.CRP): From over SAT VORTAC on SAT R-160 to YENNS/SAT 35 DME, then on THX R-337 to THX VORTAC, then on THX R-126 and CRP R-305 to CRP VORTAC.

LAREDO TRANSITION (BOWIE7.LRD): From over SAT VORTAC on SAT R-190 to MILET/SAT 57 DME, then on LRD R-015 to LRD VORTAC.

SC-3, 20 FEB 2025 to 20 MAR 2025

SC-3, 20 FEB 2025 to 20 MAR 2025