

LEJON FOUR DEPARTURE

ATIS
128.8
CLNC DEL (When nwr closed)
121.7
GND CON
121.7 379.9
SAN ANTONIO DEP CON
125.7 290 225
STINSON TOWER *
118.2 379.9

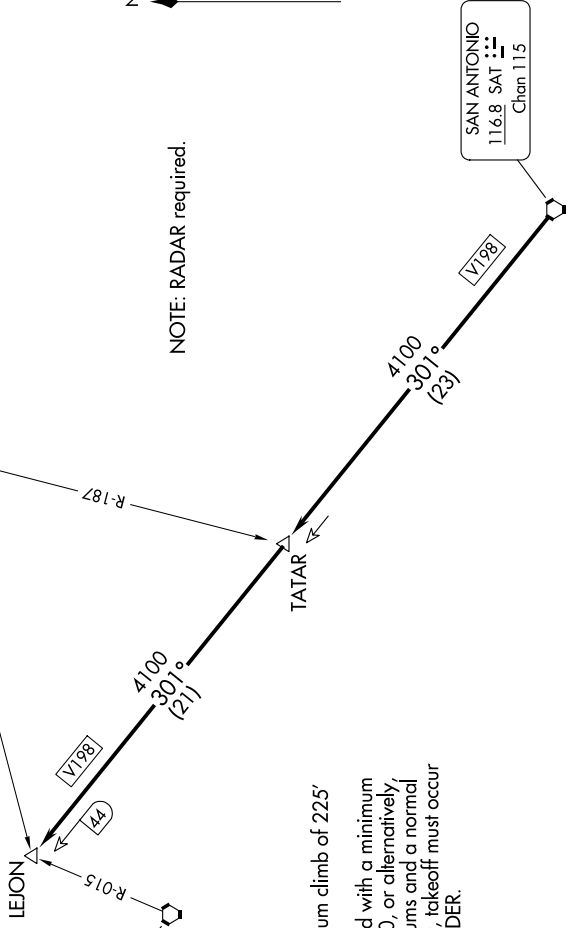
STONEWALL
113.8 STV
Chan 85

CENTER POINT
117.5 CSI
Chan 122

SAN ANTONIO
116.8 SAT
Chan 115



NOTE: RADAR required.



NOTE: Chart not to scale

SC-3, 20 FEB 2025 to 20 MAR 2025

SC-3, 20 FEB 2025 to 20 MAR 2025

TAKEOFF MINIMUMS

Rwy 14, 32: Standard.
Rwy 9: Standard with minimum climb of 225' per NM to 1900.
Rwy 27: 300-1/4 or standard with a minimum climb of 221' per NM to 900, or alternatively with standard takeoff minimums and a normal 200' per NM climb gradient, takeoff must occur no later than 1700' prior to DER.

DEPARTURE ROUTE DESCRIPTION
 TAKEOFF RUNWAYS 9, 14, 27, 32: Climb on assigned heading and altitude for RADAR vectors to SAT VORTAC, thence, on depicted route to LEJON INT. Expect filed altitude 10 minutes after departure.