

# SNIDR ONE DEPARTURE (RNAV)

SC-3, 20 FEB 2025 to 20 MAR 2025

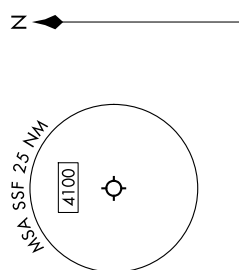
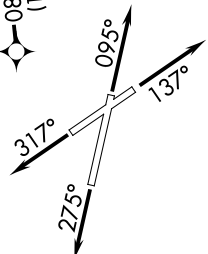
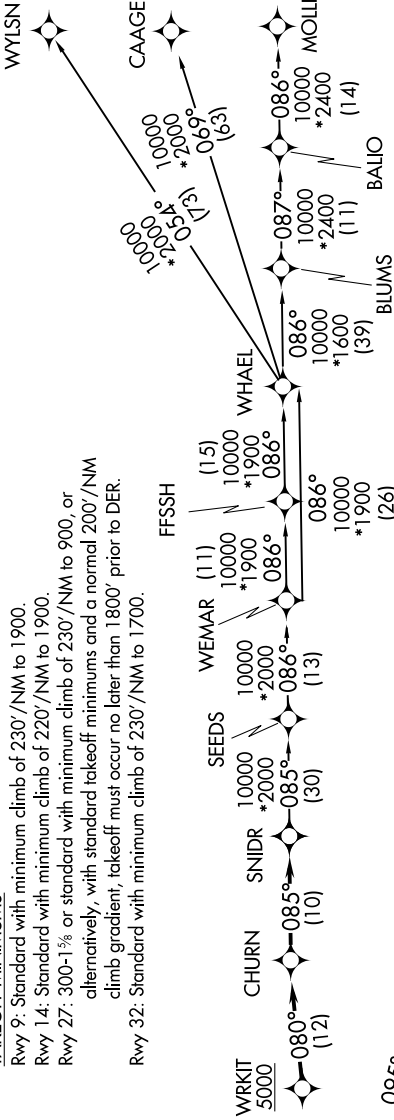
SAN ANTONIO DEP CON  
125.7 290.225  
ATIS  
128.8  
CLNC DEL (When twr closed)  
121.7  
GND CON  
121.7 379.9  
STINSON TOWER\*  
118.2 379.9

### TAKEOFF MINIMUMS

- Rwy 9: Standard with minimum climb of 230'/NM to 1900.
- Rwy 14: Standard with minimum climb of 220'/NM to 1900.
- Rwy 27: 300-1% or standard with minimum climb of 230'/NM to 900, or alternatively, with standard takeoff minimums and a normal 200'/NM climb gradient, takeoff must occur no later than 1800' prior to DER.
- Rwy 32: Standard with minimum climb of 230'/NM to 1700.

RNAV 1 - DME/DME IRU or GPS.  
RADAR required.

### TOP ALTITUDE: ASSIGNED BY ATC



### DEPARTURE ROUTE DESCRIPTION

- TAKEOFF RUNWAY 9:** Climb on heading 095° or as assigned by ATC, for vectors to WRKIT, thence...
- TAKEOFF RUNWAY 14:** Climb on heading 137° or as assigned by ATC, for vectors to WRKIT, thence...
- TAKEOFF RUNWAY 27:** Climb on heading 275° or as assigned by ATC, for vectors to WRKIT, thence...
- TAKEOFF RUNWAY 32:** Climb on heading 317° or as assigned by ATC, for vectors to WRKIT, thence...
- ...on track 080° to CHURN, then on track 085° to SNIDR, then on transition. Maintain ATC assigned altitude.

- BLUMS TRANSITION (SNIDR1.BLUMS)
- CAAGE TRANSITION (SNIDR1.CAAGE)
- FFSH TRANSITION (SNIDR1.FFSH)
- MOLLR TRANSITION (SNIDR1.MOLLR)
- SEEDS TRANSITION (SNIDR1.SEEDS)
- WEMAR TRANSITION (SNIDR1.WEMAR)
- WHAEL TRANSITION (SNIDR1.WHAEL)
- WYLSN TRANSITION (SNIDR1.WYLSN)

Note: Chart not to scale.

SC-3, 20 FEB 2025 to 20 MAR 2025

# SNIDR ONE DEPARTURE (RNAV)