

BARET FIVE ARRIVAL
(BARET, BARET5) 08/AN/15

BARET FIVE ARRIVAL
(BARET, BARET5) 23334

AL-373 (FAA)

SAN DIEGO, CALIFORNIA

SOCAL APP CON
124.35 279.625
KNZY ATIS*
317.8
SAN D-ATIS
134.8

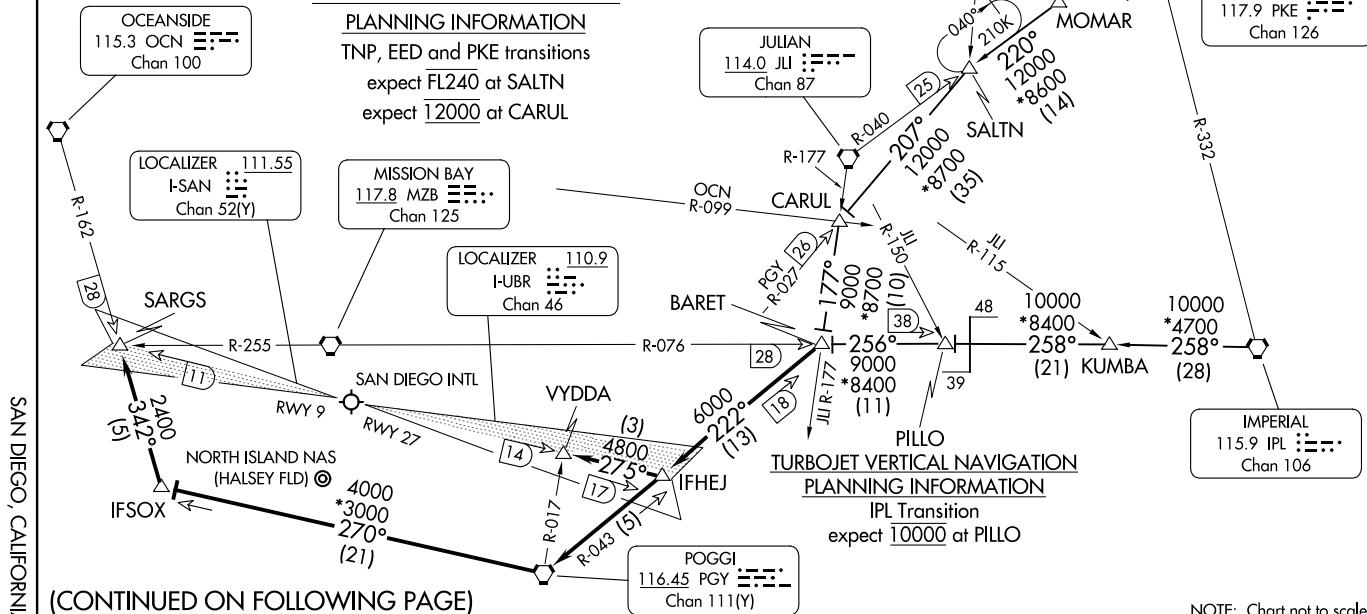
NOTE: Turbojet aircraft only.
NOTE: RADAR required.
NOTE: When SAN arrivals are using Rwy 9, aircraft can expect to depart and re-enter the TCA southwest of PGY VORTAC.



TURBOJET VERTICAL NAVIGATION

PLANNING INFORMATION

TNP, EED and PKE transitions
expect FL240 at SALTN
expect 12000 at CARUL



(CONTINUED ON FOLLOWING PAGE)

NOTE: Chart not to scale.

ARRIVAL ROUTE DESCRIPTION

IMPERIAL TRANSITION (IPL.BARET5): From over IPL VORTAC on IPL R-258 and MZB R-076 to BARET INT. Thence

NEEDLES TRANSITION (EED.BARET5): From over EED VORTAC on EED R-208 to SHADI INT, then on JLI R-040 to SALTN INT, then on PGY R-027 to CARUL INT, then on JLI R-177 to BARET INT. Thence

PARKER TRANSITION (PKE.BARET5): From over PKE VORTAC on PKE R-227 to SHADI INT, then on JLI R-040 to SALTN INT, then on PGY R-027 to CARUL INT, then on JLI R-177 to BARET INT. Thence

TWENTYNINE PALMS TRANSITION (TNP.BARET5): From over TNP VORTAC on TNP R-179 to MOMAR INT, then on JLI R-040 to SALTN INT, then on PGY R-027 to CARUL INT, then on JLI R-177 to BARET INT. Thence

. . . .LANDING SAN RWY 9: From BARET INT on PGY R-043 to PGY VORTAC, then on PGY R-270 to IFSOX, then on OCN R-162 to SARGS INT.

Expect ILS Rwy 9 approach to SAN or LOC/DME-B to NZY.

. . . .LANDING SAN RWY 27 and NZY: From BARET INT on PGY R-043 to IFHEJ, then on I-UBR localizer to VYDDA INT. Expect LOC Rwy 27 approach to SAN or LOC/DME-A to NZY.

LOST COMMUNICATIONS: In the event of lost communications, North Island arrivals shall execute the TACAN Rwy 29 or TACAN Rwy 36.

SW-3, 20 FEB 2025 to 20 MAR 2025

SW-3, 20 FEB 2025 to 20 MAR 2025