

# PEBLE SIX DEPARTURE

AL-373 (FAA)

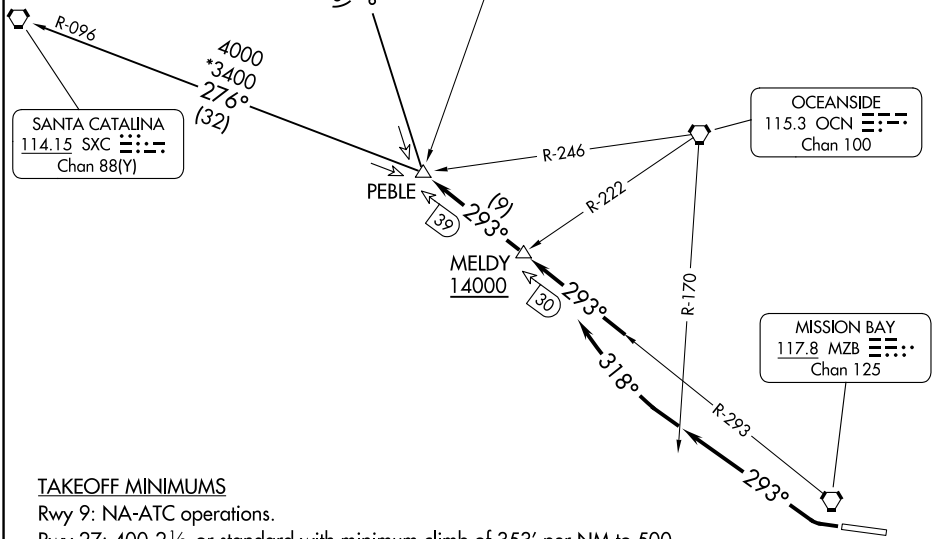
SAN DIEGO INTL (SAN)  
SAN DIEGO, CALIFORNIA

**TOP ALTITUDE:  
ASSIGNED BY ATC**

SEAL BEACH  
115.7 SLI Chan 104

PARADISE  
112.2 PDZ Chan 59

SOCAL DEP CON  
WEST 119.6 363.1  
D-ATIS  
134.8  
CLNC DEL  
125.9  
CPDLC  
GND CON  
123.9  
LINDBERGH TOWER  
118.3 338.225



**TAKEOFF MINIMUMS**

Rwy 9: NA-ATC operations.

Rwy 27: 400-2½ or standard with minimum climb of 353' per NM to 500.

NOTE: RADAR required.

NOTE: Aircraft climbing above 13000 expect RADAR vectors northwest bound prior to PEBLE INT.

NOTE: Chart not to scale.

## DEPARTURE ROUTE DESCRIPTION

**TAKEOFF RUNWAY 27:** Climbing right turn heading 293° until crossing OCN VORTAC R-170, then turn right heading 318° to intercept MZB VORTAC R-293 to cross MELDY INT/MZB 30 DME at or above 14000 (or lower ATC assigned altitude) then on MZB R-293 to PEBLE INT/MZB 39 DME, thence. . . .

. . . . via (transition) or (assigned route). Maintain assigned altitude.

**SANTA CATALINA TRANSITION (PEBLE6.SXC):** From over PEBLE INT on SXC R-096 to SXC VORTAC.

**SEAL BEACH TRANSITION (PEBLE6.SLI):** From over PEBLE INT on SLI R-148 to SLI VORTAC.

# PEBLE SIX DEPARTURE

SW-3, 20 FEB 2025 to 20 MAR 2025

SW-3, 20 FEB 2025 to 20 MAR 2025