

PLYA TWO ARRIVAL (RNAV)

AL-373 (FAA)

SAN DIEGO INTL (SAN)
SAN DIEGO, CALIFORNIA

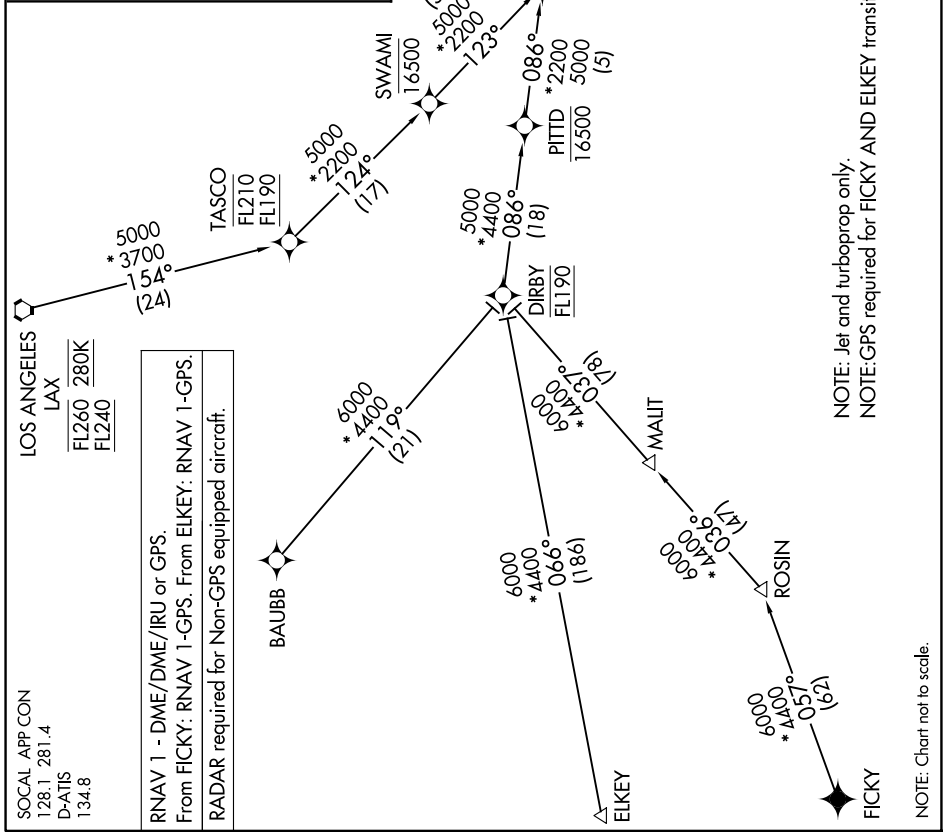
SW-3, 20 FEB 2025 to 20 MAR 2025

ARRIVAL ROUTE DESCRIPTION

BAUBB TRANSITION (BAUBB.PLYA2)
ELKEY TRANSITION (ELKEY.PLYA2)
FICKY TRANSITION (FICKY.PLYA2)
LOS ANGELES TRANSITION (LAX.PLYA2)

From PLYA on track 126° to cross MNLTY at or above 4000.

LANDING RUNWAY 9: From MNLTY on track 120° to cross SARGS at or above 2100. Expect ILS or LOC RWY 9 approach.



PLYA TWO ARRIVAL (RNAV)

SAN DIEGO, CALIFORNIA
SAN DIEGO INTL (SAN)

NOTE: Jet and turboprop only.
NOTE:GPS required for FICKY AND ELKEY transitions.

NOTE: Chart not to scale.

SW-3, 20 FEB 2025 to 20 MAR 2025