

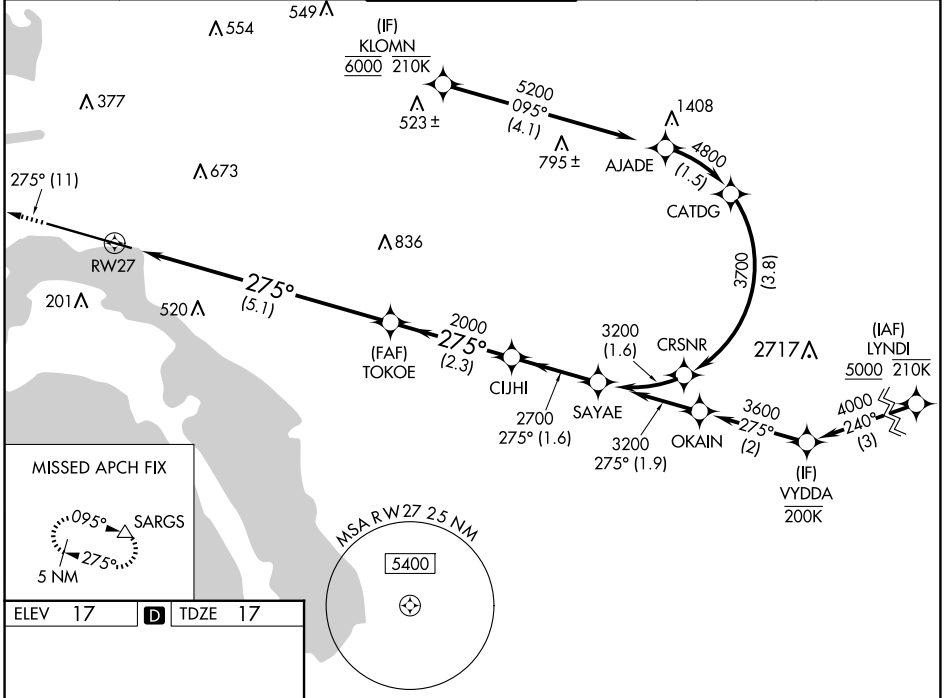
APP CRS 275°	Rwy Idg TDZE Apt Elev	7591 17 17
------------------------	-----------------------------	---------------------------------------

RNAV (RNP) Z RWY 27

SAN DIEGO INTL (SAN)

RNP AR APCH - GPS. Authorization required. From KLOMN: RF.		MALS A_4	MISSED APPROACH: Climb to 2500 on track 275° to SARGs and hold.
<p>▼ For uncompensated Baro-VNAV systems, procedure NA below 5°C or above 44°C. For inop ALS, increase RNP 0.30 all Cats visibility to 2½ SM. Straight-in Rwy 27 at night, operational VGSI required, remain on or above VGSI glidepath until threshold.</p>			

D-ATIS 134.8	SOCAL APP CON 119.6 363.1 (WEST) 124.35 279.625 (EAST)	LINDBERGH TOWER 118.3 338.225	GND CON 123.9	CLNC DEL 125.9	CPDLC
------------------------	--	---	-------------------------	--------------------------	-------

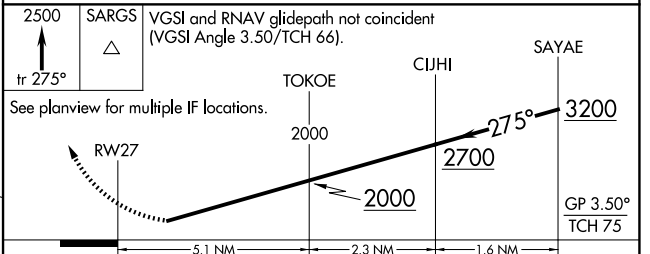


ELEV 17 | **D** | TDZE 17

TWR 159
9401 X 200
70
275°

MSA R W 27 2.5 NM
5400

TDZ/CL Rws 9 and 27
HIRL Rwy 9-27



CATEGORY	A	B	C	D
RNP 0.11 DA		624-1½	607 (700-1½)	
RNP 0.30 DA		789-2	772 (800-2)	

AUTHORIZATION REQUIRED

SW-3, 20 FEB 2025 to 20 MAR 2025

SW-3, 20 FEB 2025 to 20 MAR 2025