

SOCAL APP CON  
 119.6 363.1  
 D-ATIS  
 134.8

LOS ANGELES  
 113.6 LAX   
 Chan 83


**VERTICAL NAVIGATION  
 PLANNING INFORMATION**


Expect FL270

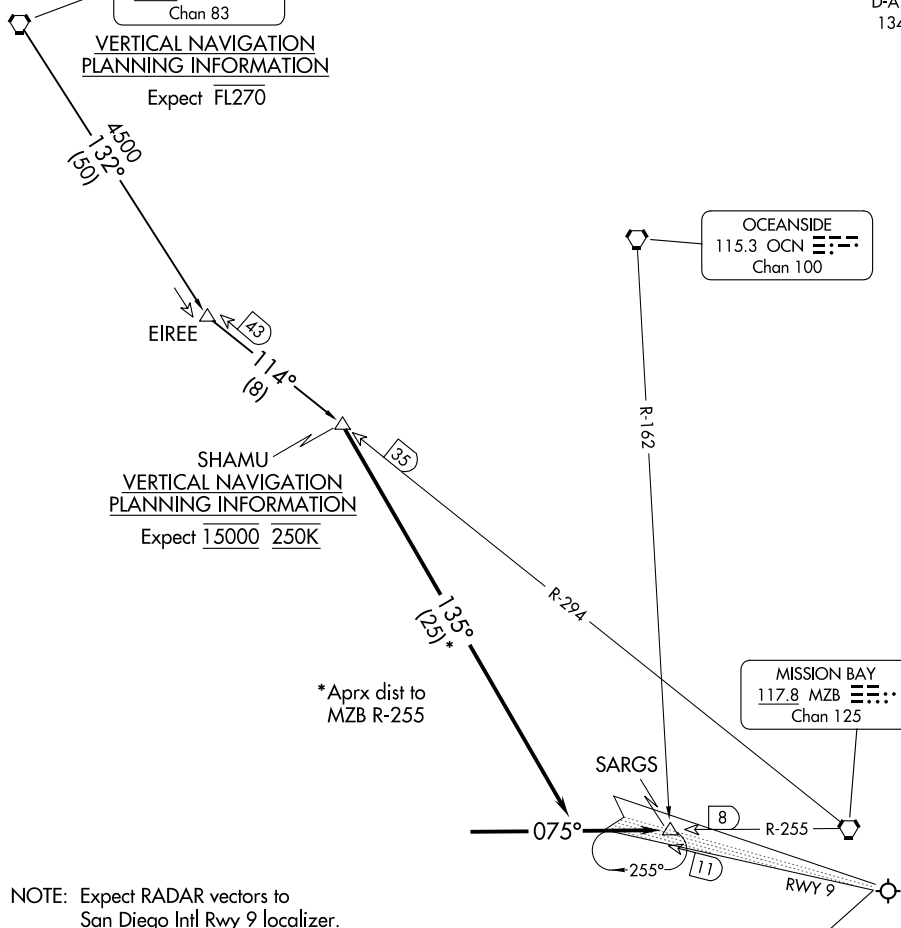
OCEANSIDE  
 115.3 OCN   
 Chan 100

**SHAMU  
 VERTICAL NAVIGATION  
 PLANNING INFORMATION**

Expect 15000 250K

MISSION BAY  
 117.8 MZB   
 Chan 125

LOCALIZER  
 I-SAN   
 Chan 52(Y)



\* Aprx dist to MZB R-255

NOTE: Expect RADAR vectors to San Diego Intl Rwy 9 localizer.

NOTE: DME required.

NOTE: RADAR required.

NOTE: Chart not to scale.

**ARRIVAL ROUTE DESCRIPTION**

LOS ANGELES TRANSITION (LAX.SHAMU1): From over LAX VORTAC via LAX R-132 and MZB R-294 to SHAMU FIX. Thence. . .

. . . From over SHAMU FIX via heading 135° to intercept MZB R-255 then via MZB R-255 to SARGS INT. Expect RADAR vectors to SAN Rwy 9 localizer.

SW-3, 20 FEB 2025 to 20 MAR 2025

SW-3, 20 FEB 2025 to 20 MAR 2025