

# VOR/DME RWY 29

VORTAC PGY <b>116.45</b> Chan <b>111(Y)</b>	APCH CRS <b>279°</b>	Rwy Ildg TDZE Arprt Elev <b>7501</b> <b>26</b> <b>26</b>
---	-------------------------	---

[USN]

NORTH ISLAND NAS (HALSEY FIELD) (KNZY)

▼ \* When ALS inop, increase CAT AB vis to 1 mile, CAT CD vis to 1¾ miles.  
\*\* Circling not authorized W of Rwy 18-36. Circling authorized to Rwy 18 only.

ALSF-1

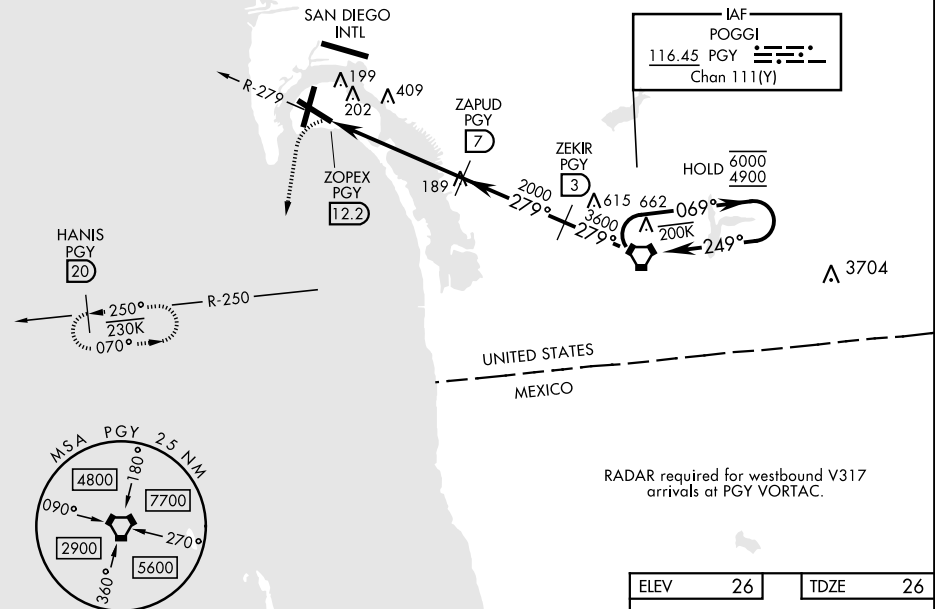


MISSED APPROACH: Climbing left turn to 2000 via hdg 177° intercept PGY VORTAC R-250 to HANIS and hold.

ATIS ★ <b>317.8</b>	SOCAL APP CON <b>125.15 317.55</b>	TOWER ★ <b>135.1 336.4</b>	GND CON <b>118.0 360.675</b>	CLNC DEL <b>128.4 288.25</b>	PAR/ASR
------------------------	---------------------------------------	-------------------------------	---------------------------------	---------------------------------	---------

Visibility reduction by helicopters not authorized.

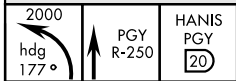
CAUTION:  
Final apch length 12.2 NM.  
Final apch intersects RCL at 3733'.



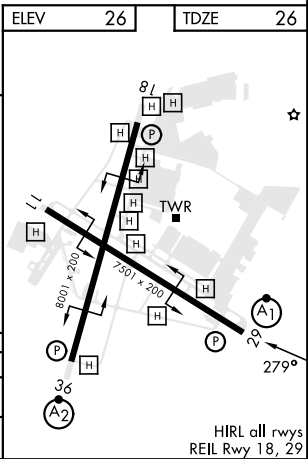
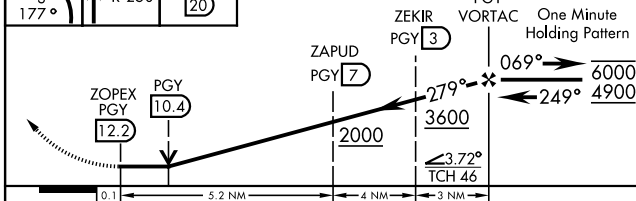
SW-3, 20 FEB 2025 to 20 MAR 2025

SW-3, 20 FEB 2025 to 20 MAR 2025

EMERG SAFE ALT 100 NM 13,700



VGSI and descent angles not coincident (VGSI Angle 3.00/TCH 46).



CATEGORY	A	B	C	D
S-29 *	660-¾ 634 (700-¾)		660-1⅓ 634 (700-1⅓)	
☑ CIRCLING **	660-1 634 (700-1)		NOT AUTHORIZED	

# VOR/DME RWY 29

HIRL all rwys  
REIL Rwy 18, 29