

LOC/DME I-GWQ <b>111.7</b> Chan 54	APP CRS <b>284°</b>	Rwy Idg 28R 28L	11236 10275
		TDZE 13 13	
		Apt Elev 13 13	

# ILS or LOC RWY 28R

SAN FRANCISCO INTL (SFO)

RNAV 1-GPS or RADAR required for procedure entry.

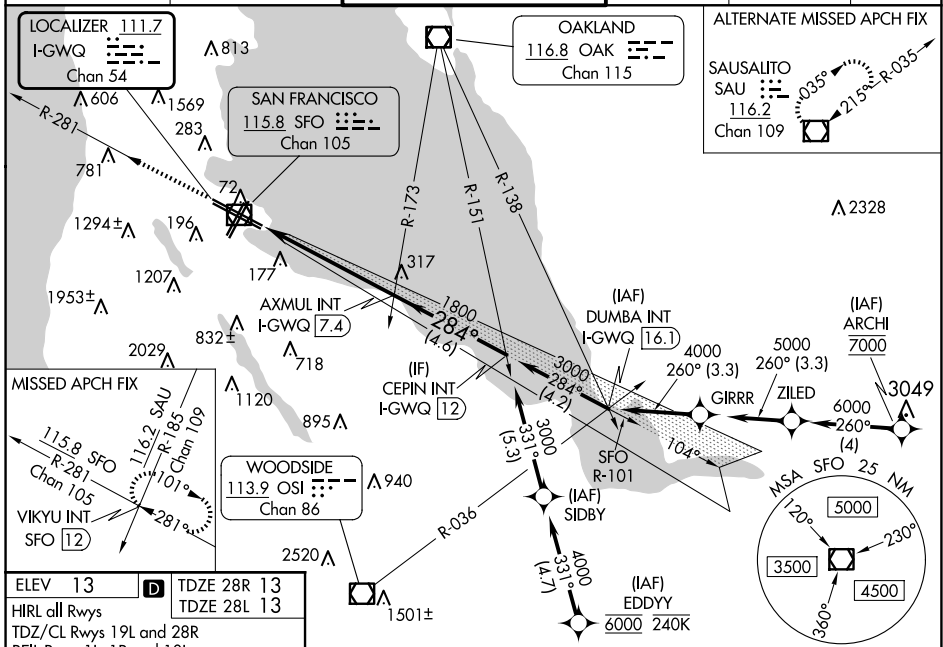
**⚠** Circling NA to Rwy 10L, 10R, 19L, and 19R. Circling Rwy 1L, 1R NA at night. LOC procedure NA during simultaneous operations. For inop ALS increase S-LOC 28R\* Cat C/D visibility to 1 3/8 SM. Simultaneous approach authorized. Simultaneous operations require use of vertical guidance; maintain last assigned altitude until established on glideslope.

ALSIF-2 Rwy 28R

MALSR Rwy 28L

MISSED APPROACH: Climb to 3000 on SFO VOR/DME R-281 to VIKYU INT/SFO 12 DME and hold.  
\*Missed approach requires minimum climb of 350 feet per NM to 1900; if unable to meet climb gradient, see ILS or LOC RWY 28L.

D-ATIS <b>113.7 115.8</b> <b>118.85</b>	NORCAL APP CON <b>134.5 338.2</b>	SAN FRANCISCO TOWER <b>120.5 269.1</b>	GND CON <b>121.8</b>	CLNC DEL <b>118.2</b>	CPDLC
-----------------------------------------------	--------------------------------------	-------------------------------------------	-------------------------	--------------------------	-------

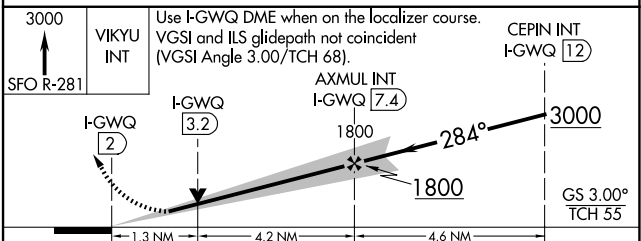


ELEV 13	TDZE 28R 13
HIRL all Rwys	TDZE 28L 13
TDZ/CL Rwys 19L and 28R	
REIL Rwys 1L, 1R and 10L	

FAF to MAP 5.4 NM

Knots	60	90	120	150	180
Min:Sec	5:24	3:36	2:42	2:10	1:48

**Ⓢ** CIRCLING



CATEGORY	A	B	C	D
S-ILS 28R*	213/18 200 (200-1/2)			
S-LOC 28R*	480/24	467 (500-1/2)	480/50	467 (500-1)
SIDESTEP* 28L	480/55 467 (500-1)			480-1 1/2 467 (500-1 1/2)
<b>Ⓢ</b> CIRCLING	740-1 727 (800-1)	960-1 1/4 947 (1000-1 1/4)	1560-3 1547 (1600-3)	NA

SW-2, 20 FEB 2025 to 20 MAR 2025

SW-2, 20 FEB 2025 to 20 MAR 2025