

# MODESTO NINE ARRIVAL

AL-375 (FAA)

SAN FRANCISCO INTL (SFO)  
SAN FRANCISCO, CALIFORNIA

SW-2, 20 FEB 2025 to 20 MAR 2025

## ARRIVAL ROUTE DESCRIPTION

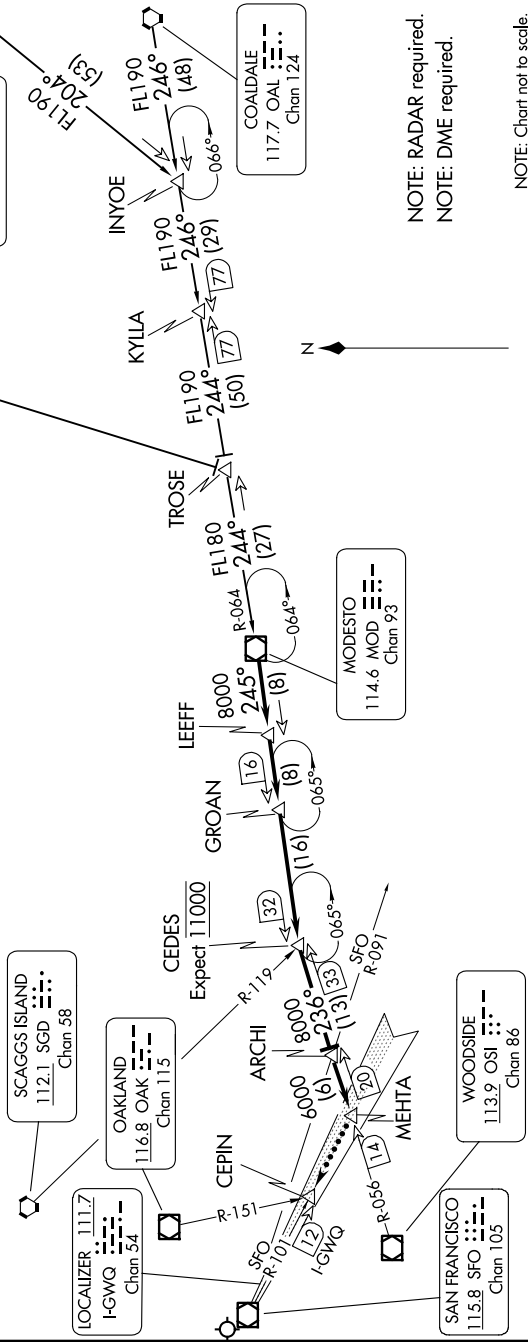
**COALDALE TRANSITION [OAL.MOD9]:** From over OAL VORTAC on OAL R-246 and MOD R-064 to MOD VOR/DME. Thence. . . .

**MINA TRANSITION [MVA.MOD9]:** From over MVA VORTAC on MVA R-204 and OAL R-246 and MOD R-064 to MOD VOR/DME. Thence. . . .

**MUSTANG TRANSITION [FMG.MOD9]:** From over FMG VORTAC on FMG R-182 and MOD R-064 to MOD VOR/DME. Thence. . . .

. . . . From over MOD VOR/DME on MOD R-245 to LEEFF, then on MOD R-245 to GROAN, then on MOD R-245 to CEDES, then on OSI VOR/DME R-056 to ARCHI, then on OSI R-056 to MEHTA. Expect RADAR vectors to final approach course.

**LOST COMMUNICATIONS:** Intercept and proceed on SFO RWY 28R localizer to CEPIN.



NOTE: RADAR required.  
NOTE: DME required.

NOTE: Chart not to scale.

# MODESTO NINE ARRIVAL

SAN FRANCISCO, CALIFORNIA  
SAN FRANCISCO INTL (SFO)

SW-2, 20 FEB 2025 to 20 MAR 2025