


LOC/DME I-SNA 111.75 Chan 54(Y)	APP CRS 196°	Rwy Idg TDZE 54 Apt Elev 56	5700
---	------------------------	---	-------------


ILS RWY 20R (SA CAT I)

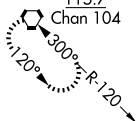
JOHN WAYNE/ORANGE COUNTY (SNA)

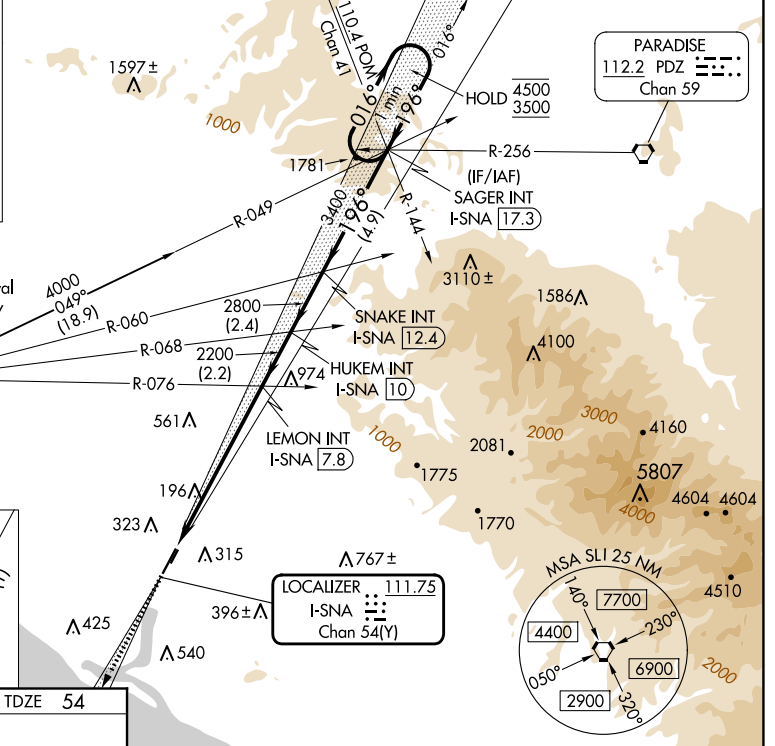
⚠ Requires specific OPSPEC, MSPEC, or LOA approval.
Procedure NA when tower closed.

MALS  MISSED APPROACH: Climb to 3000 on I-SNA LOC south course (196°) to MINOE INT/I-SNA 10.9 DME.

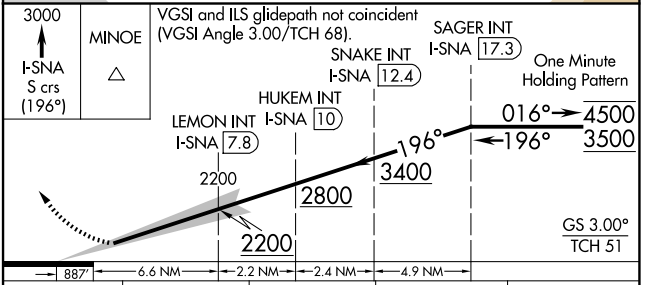
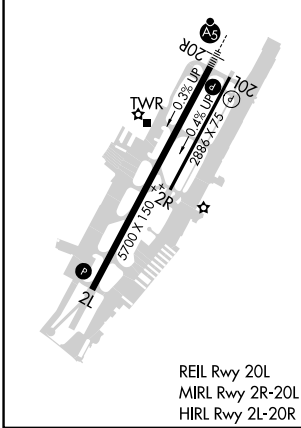
D-ATIS 126.0	SOCAL APP CON 121.3 263.1	JOHN WAYNE TOWER * 126.8 (CTAF) 343.625	GND CON 120.8	CLNC DEL 118.0	CPDLC	UNICOM 122.95
------------------------	-------------------------------------	--	-------------------------	--------------------------	-------	-------------------------

ALTERNATE MISSED APCH FIX
SEAL BEACH
SLI 
115.7
Chan 104





ELEV 56	D	TDZE 54
---------	----------	---------



CATEGORY	A	B	C	D
S-ILS 20R	RA 201/14 167 DA 221			

SA CATEGORY I ILS - SPECIAL AIRCREW & AIRCRAFT CERTIFICATION REQUIRED

SW-3, 20 FEB 2025 to 20 MAR 2025

SW-3, 20 FEB 2025 to 20 MAR 2025