

APP CRS	Rwy Idg	<b>5700</b>
<b>196°</b>	TDZE	<b>54</b>
	Apt Elev	<b>56</b>

# RNAV (RNP) Z RWY 20R

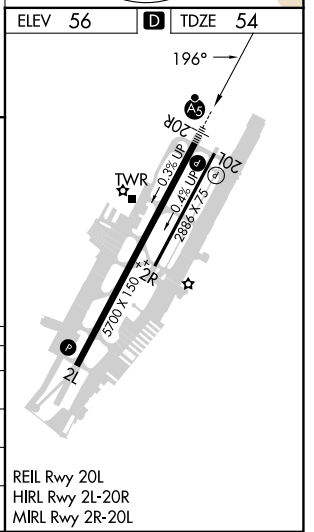
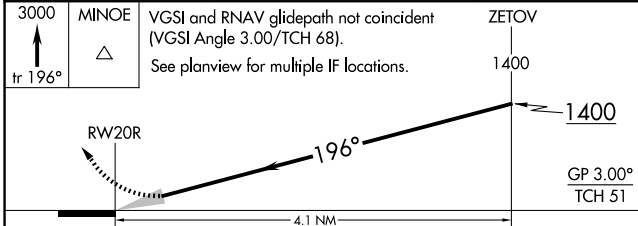
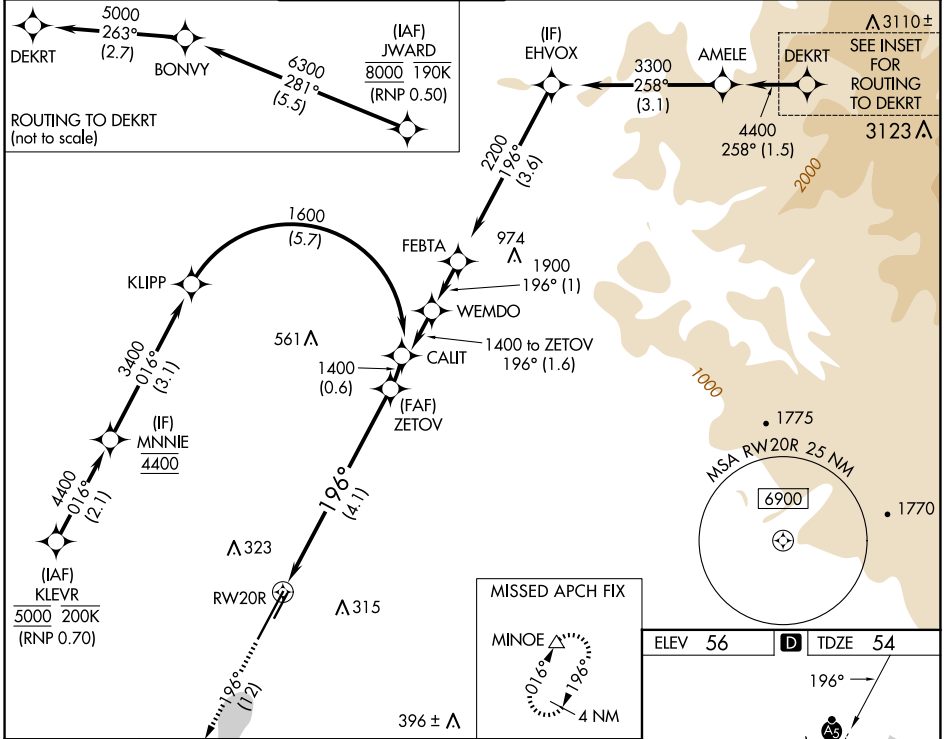
JOHN WAYNE/ORANGE COUNTY (SNA)

RNP AR APCH - GPS. Authorization required. From JWARD: min RNP 0.50. From KLEVR, RF, min RNP 0.70.

For uncompensated Baro-VNAV systems, procedure NA below 5°C or above 54°C.

MALSR MISSED APPROACH: Climb to 3000 on track 196° to MINOE and hold, continue climb-in-hold.

D-ATIS <b>126.0</b>	SOCAL APP CON <b>121.3 263.1</b>	<b>JOHN WAYNE TOWER ★</b> <b>126.8</b> (CTAF) <b>343.625</b>	GND CON <b>120.8</b>	CLNC DEL <b>118.0</b>	CPDLC	UNICOM <b>122.95</b>
------------------------	-------------------------------------	---	-------------------------	--------------------------	-------	-------------------------



CATEGORY	A	B	C	D
RNP 0.11 DA		376/26	322 (400-½)	
RNP 0.15 DA		562/55	508 (600-1)	
RNP 0.30 DA		618-1¼	564 (600-1¼)	

## AUTHORIZATION REQUIRED

SW-3, 20 FEB 2025 to 20 MAR 2025

SW-3, 20 FEB 2025 to 20 MAR 2025