

APP CRS	Rwy Idg	<b>5700</b>
<b>016°</b>	TDZE	<b>56</b>
	Apt Elev	<b>56</b>

# RNAV (RNP) Z RWY 2L

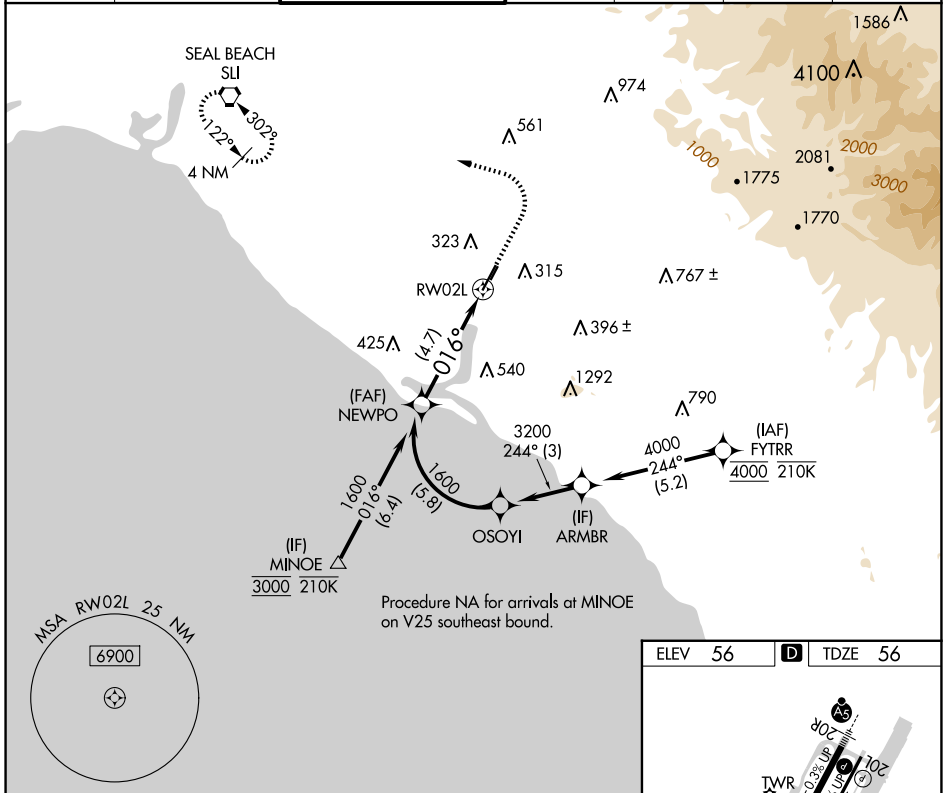
JOHN WAYNE/ORANGE COUNTY (SNA)

RNP AR APCH - GPS. Authorization required. From OSOYI: RF.

▼ For uncompensated Baro-VNAV systems, procedure NA below 5°C or above 54°C.

MISSED APPROACH: Climb to 800 then climbing left turn to 2600 direct SLI VORTAC and hold.

D-ATIS <b>126.0</b>	SOCAL APP CON <b>121.3 263.1</b>	<b>JOHN WAYNE TOWER *</b> <b>126.8</b> (CTAF) <b>0 343.625</b>	GND CON <b>120.8</b>	CLNC DEL <b>118.0</b>	CPDLC	UNICOM <b>122.95</b>
------------------------	-------------------------------------	---	-------------------------	--------------------------	-------	-------------------------



SW-3, 20 FEB 2025 to 20 MAR 2025

SW-3, 20 FEB 2025 to 20 MAR 2025

VGSI and RNAV glidepath not coincident (VGSI Angle 3.00/TCH 75).

NEWPO  
1600

1600

016°

GP 3.00°  
TCH 55

See planview for multiple IF locations.

4.7 NM

RW02L

CATEGORY	A	B	C	D
RNP 0.30 DA		403-1 1/8	347 (400-1 1/8)	

**AUTHORIZATION REQUIRED**

ELEV	56	D	TDZE	56
------	----	---	------	----

REIL Rwy 20L  
MIRL Rwy 2R-20L  
HIRL Rwy 2L-20R