

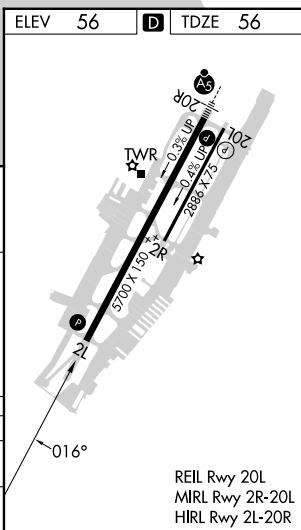
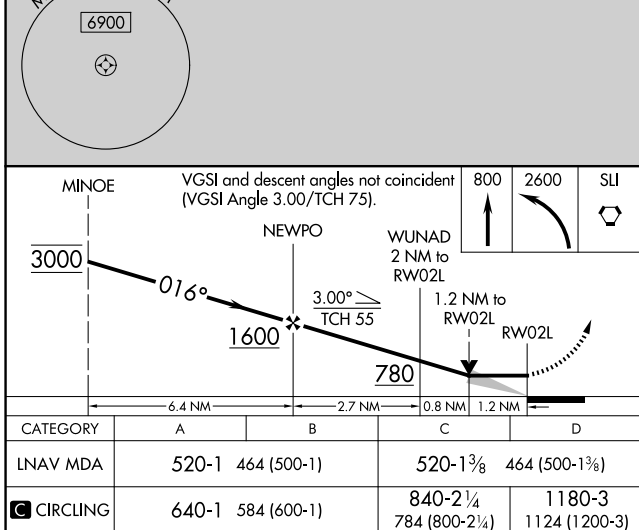
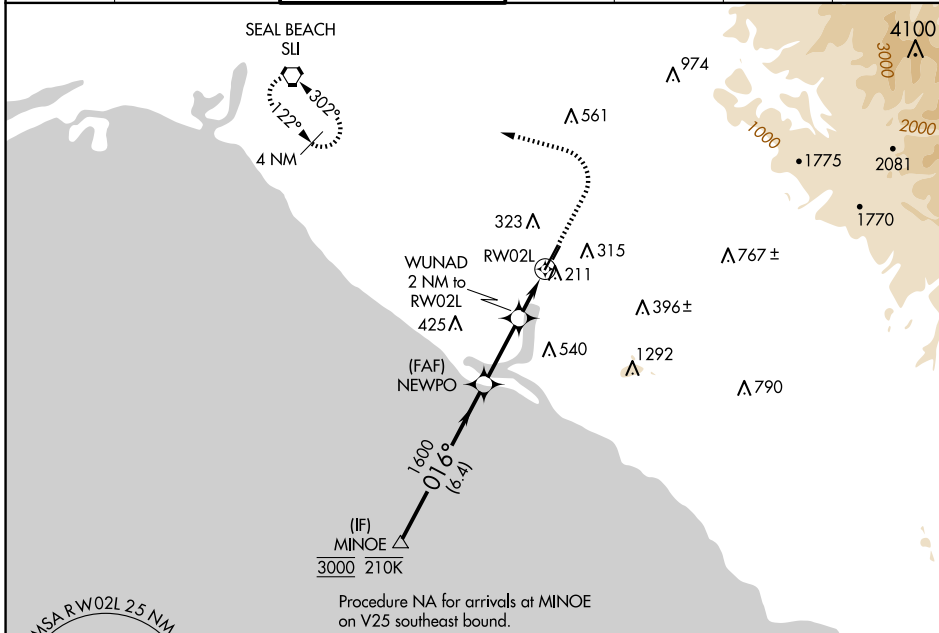
APP CRS	Rwy Idg	5700
016°	TDZE	56
	Apt Elev	56

RNAV (GPS) Y RWY 2L

JOHN WAYNE/ORANGE COUNTY (SNA)

RNP APCH - GPS.		MISSED APPROACH: Climb to 800 then climbing left turn to 2600 direct SLI VORTAC and hold.				
Circling Rwy 20L NA at night.						

D-ATIS 126.0	SOCAL APP CON 121.3 263.1	JOHN WAYNE TOWER ★ 126.8 (CTAF) 0 343.625	GND CON 120.8	CLNC DEL 118.0	CPDLC	UNICOM 122.95
------------------------	-------------------------------------	--	-------------------------	--------------------------	-------	-------------------------



SW-3, 20 FEB 2025 to 20 MAR 2025

SW-3, 20 FEB 2025 to 20 MAR 2025