

STAY FOUR DEPARTURE (RNAV)
(STAY4.STAY) 24MAR22

SANTA ANA, CALIFORNIA
JOHN WAYNE/ORANGE COUNTY (SNA)

D-ATIS
126.0
CLNC DEL
118.0
CPDLC
GND CON
120.8
JOHN WAYNE TOWER*
126.8 343.625
SOCAL DEP CON
128.1 281.4

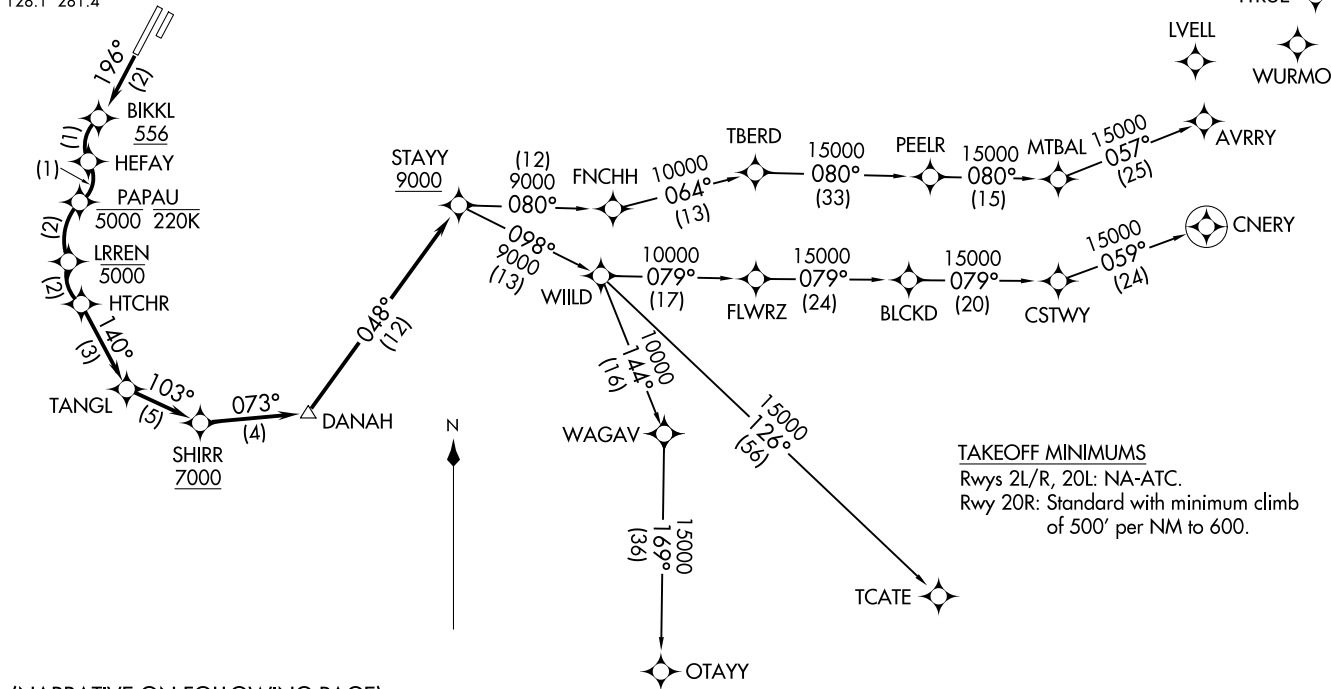
NOTE: RNP 1.
NOTE: RF required.
NOTE: GPS required.
NOTE: RADAR required.
NOTE: Turbojet only.
NOTE: Parachute jumping all hours, 14000 and below,
north of route between STAYY and FNCHH.
NOTE: Do not file-To be assigned by ATC.

TOP ALTITUDE:
13000

(STAY4.STAY) 22251
STAY FOUR DEPARTURE (RNAV)

AL-377 (FAA)

JOHN WAYNE/ORANGE COUNTY (SNA)
SANTA ANA, CALIFORNIA



NOTE: Chart not to scale.

(NARRATIVE ON FOLLOWING PAGE)



DEPARTURE ROUTE DESCRIPTION

TAKEOFF RUNWAY 20R: Climb on course 196° to cross BIKKL at or above 556, then left turn to HEFAY, then right turn to cross PAPAU at or below 5000 and at or below 220K, then left turn to cross LRREN at or below 5000, then left turn to HTCHR, then on track 140° to TANGL, then on track 103° to cross SHIRR at or above 7000, then on track 073° to DANAH, then on track 048° to cross STAYY at or above 9000, thence. . . .

. . . .on (transition). Maintain 13000. Expect filed altitude 10 minutes after departure.

AVRRY TRANSITION (STAYY4.AVRRY)

CNERY TRANSITION (STAYY4.CNERY)

OTAYY TRANSITION (STAYY4.OTAYY)

TCATE TRANSITION (STAYY4.TCATE)

SW-3, 20 FEB 2025 to 20 MAR 2025

SW-3, 20 FEB 2025 to 20 MAR 2025