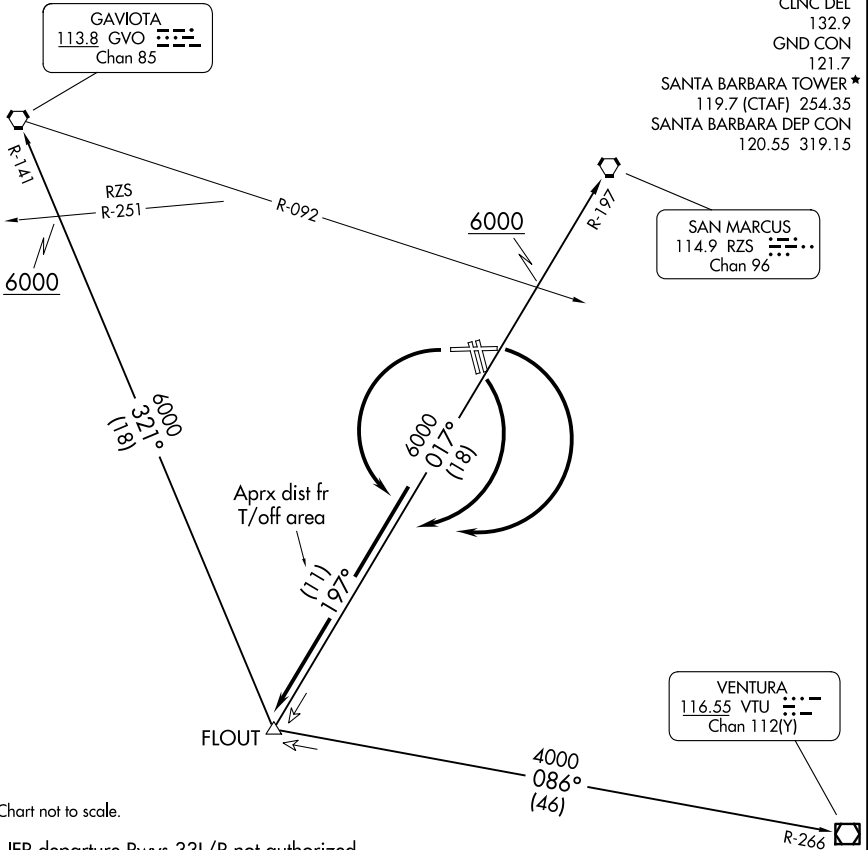


(FLOUT5.FLOUT) 24025
FLOUT FIVE DEPARTURE

AL-378 (FAA)

SANTA BARBARA MUNI (SBA)
 SANTA BARBARA, CALIFORNIA



ATIS 132.65
 CLNC DEL 132.9
 GND CON 121.7
 SANTA BARBARA TOWER* 119.7 (CTAF) 254.35
 SANTA BARBARA DEP CON 120.55 319.15

SAN MARCUS
 114.9 RZS
 Chan 96

VENTURA
 116.55 VTU
 Chan 112(Y)

NOTE: Chart not to scale.

NOTE: IFR departure Rwy 33L/R not authorized.

DEPARTURE ROUTE DESCRIPTION

TAKEOFF RUNWAYS 7 and 15L/R: Turn right, thence. . . .

TAKEOFF RUNWAY 25: Turn left, thence. . . .

. . . . intercept and proceed via RZS R-197 to FLOUT INT. Thence via (transition or assigned route.)

GAVIOTA TRANSITION (FLOUT5.GVO): From over FLOUT INT via GVO R-141 to GVO VORTAC. Cross RZS R-251 at or above 6000'.

SAN MARCUS TRANSITION (FLOUT5.RZS): From over FLOUT INT via RZS R-197 to RZS VORTAC. Cross GVO R-092 at or above 6000'.

VENTURA TRANSITION (FLOUT5.VTU): From over FLOUT INT via VTU R-266 to VTU VOR/DME.

FLOUT FIVE DEPARTURE
 (FLOUT5.FLOUT) 17JUL97

SANTA BARBARA, CALIFORNIA
 SANTA BARBARA MUNI (SBA)

SW-3, 20 FEB 2025 to 20 MAR 2025

SW-3, 20 FEB 2025 to 20 MAR 2025