

# GAUCH THREE DEPARTURE (RNAV)

AL-378 (FAA)

SW-3, 20 FEB 2025 to 20 MAR 2025

**DEPARTURE ROUTE DESCRIPTION**

**TAKEOFF RUNWAY 7:** Climb on heading 075° to intercept course 130° to RROJO, then on track 198° to KELLP, then on track 245 to CORRK, then on track 254° to KNNZI, then on track 331° to cross GAUCH at or above 6000, thence . . . . .

**TAKEOFF RUNWAYS 15L/R:** Climb on heading 152° to intercept course 202° to CORRK, then on track 254° to KNNZI, then on track 331° to cross GAUCH at or above 6000, thence . . . . .

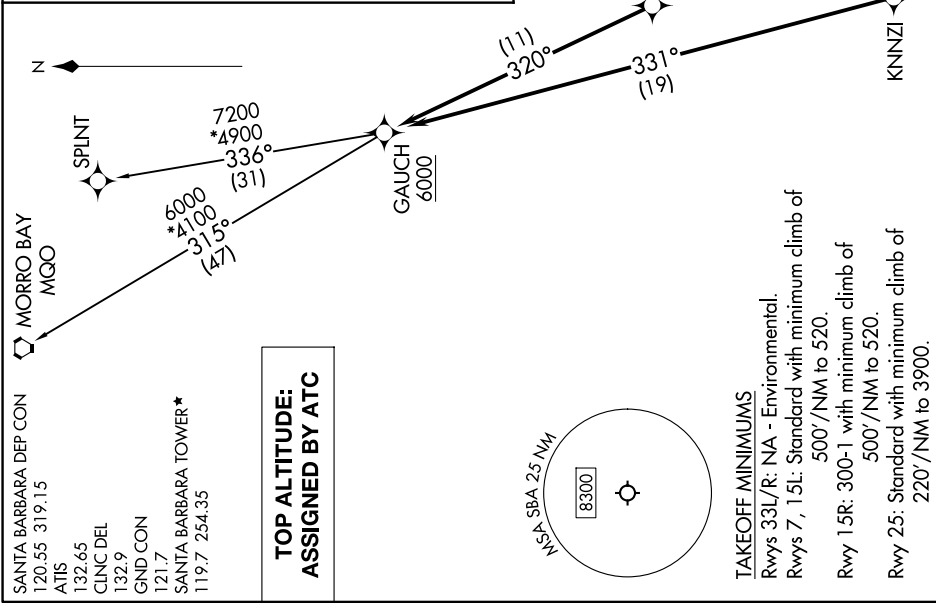
**TAKEOFF RUNWAY 25:** Climb direct GRPES, then on track 255° to GRRRR, then on track 320° to cross GAUCH at or above 6000, thence . . . . .

. . . .on (transition). Maintain ATC assigned altitude. Expect final altitude 10 minutes after departure.

MORRO BAY TRANSITION (GAUCH3.MGO)

SPLINT TRANSITION (GAUCH3.SPLINT)

RNAV 1 - DME/DME/IRU or GPS.  
RADAR required for non-GPS equipped aircraft.



NOTE: Chart not to scale.

SW-3, 20 FEB 2025 to 20 MAR 2025