

VOR GLJ <b>113.05</b>	APP CRS <b>117°</b>	Rwy Idg TDZE Apt Elev	<b>8004</b> <b>230</b> <b>261</b>
--------------------------	------------------------	-----------------------------	---

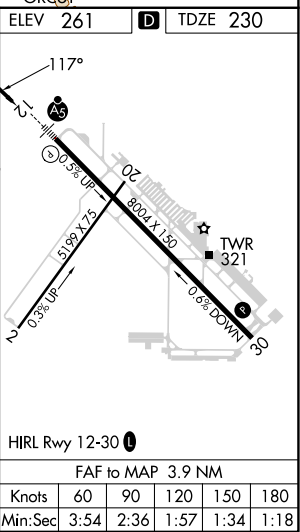
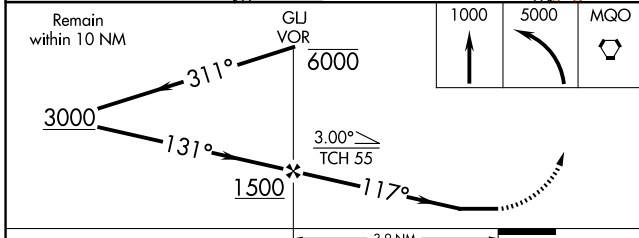
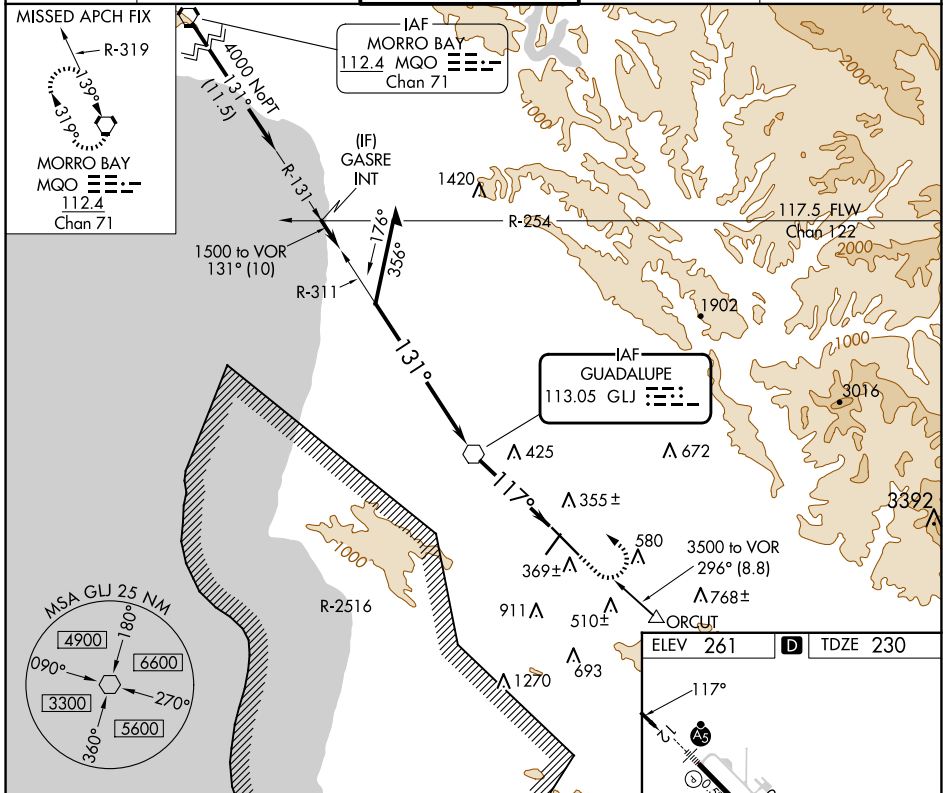
# VOR RWY 12

SANTA MARIA PUB/CAPT G ALLAN HANCOCK FLD (SMX)

When local altimeter setting not received, use San Luis Obispo altimeter setting and increase all MDA 60 feet and S-12 visibility Cat C/D to 1½ SM. For inop ALS, increase S-12 Cat C/D visibility to 1¾ SM. For inop ALS when using San Luis Obispo altimeter setting, increase S-12 Cat C/D visibility to 1¾ SM. Night Landing Rwy 2 NA.

**MALSR**  
MISSED APPROACH: Climb to 1000 then climbing left turn to 5000 direct MQO VORTAC and hold.

ATIS <b>121.15</b>	SANTA BARBARA APP CON* <b>124.15 327.8</b>	SANTA MARIA TOWER* <b>118.3 (CTAF) 239.25</b>	GND CON <b>121.9</b>	UNICOM <b>122.95</b>
-----------------------	---	--	-------------------------	-------------------------



CATEGORY	A	B	C	D
S-12	740/24	510 (500-½)	740/55	510 (500-1)
CIRCLING	860-1 599 (600-1)	1000-1 739 (800-1)	1420-3 1159 (1200-3)	1540-3 1279 (1300-3)

FAF to MAP 3.9 NM					
Knots	60	90	120	150	180
Min:Sec	3:54	2:36	1:57	1:34	1:18

# VOR RWY 12

SW-3, 20 FEB 2025 to 20 MAR 2025

SW-3, 20 FEB 2025 to 20 MAR 2025