

# COPTER VOR RWY 10

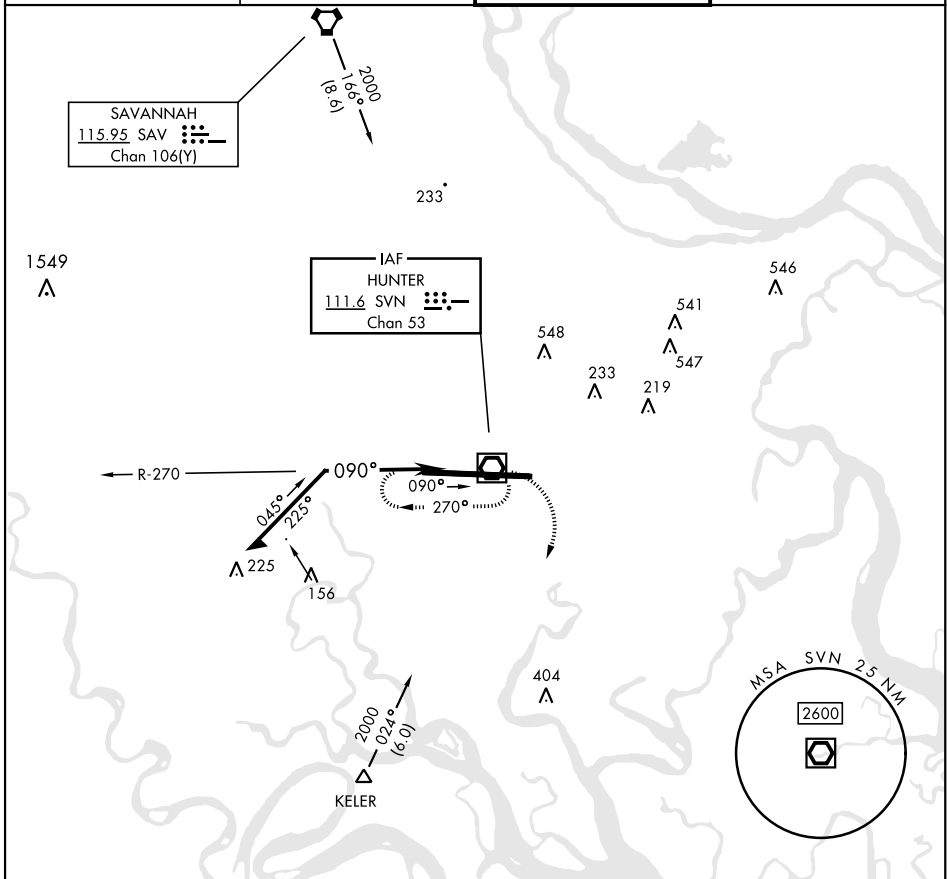
SVN VOR/DME <b>111.6</b> Chan <b>53</b>	APCH CRS <b>090°</b>	Rwy Idg <b>11,393</b> THRE <b>17</b> Arprt Elev <b>41</b>
---	-------------------------	---

[USA]

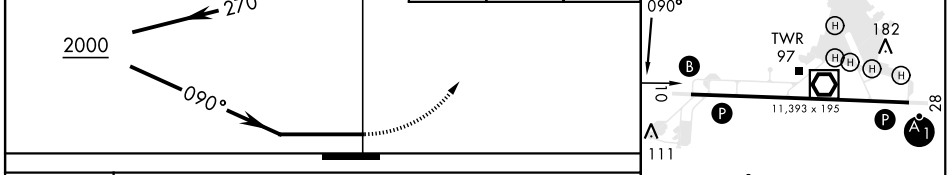
HUNTER AAF (KSVN)

**MISSED APPROACH:** Climbing right turn to 1300 via SVN VOR/DME R-195, then climbing right turn to 2000 direct SVN and hold.

ATIS ★ <b>127.525 323.125</b>	SAVANNAH APP CON ★ <b>120.4 353.775</b>	TOWER ★ <b>124.975 (CTAF) 279.575</b>	GND CON ★ <b>121.8 291.675</b>
----------------------------------	--	--	-----------------------------------



Remain within 5 NM	SVN VOR/DME	1300	2000	SVN	ELEV 41	THRE 17
		SVN R-195				184



CATEGORY	COPTER	
S-10	540-½	523 (500-½)

# COPTER VOR RWY 10

SE-4, 20 FEB 2025 to 20 MAR 2025

SE-4, 20 FEB 2025 to 20 MAR 2025