

ILS or LOC RWY 28

LOC/DME I-SVN 109.5 Chan 32	APCH CRS 276°	Rwy Idg 11,393 TDZE 41 Arpt Elev 41
---	-------------------------	--

[USA]

HUNTER AAF (KSVN)

DME required

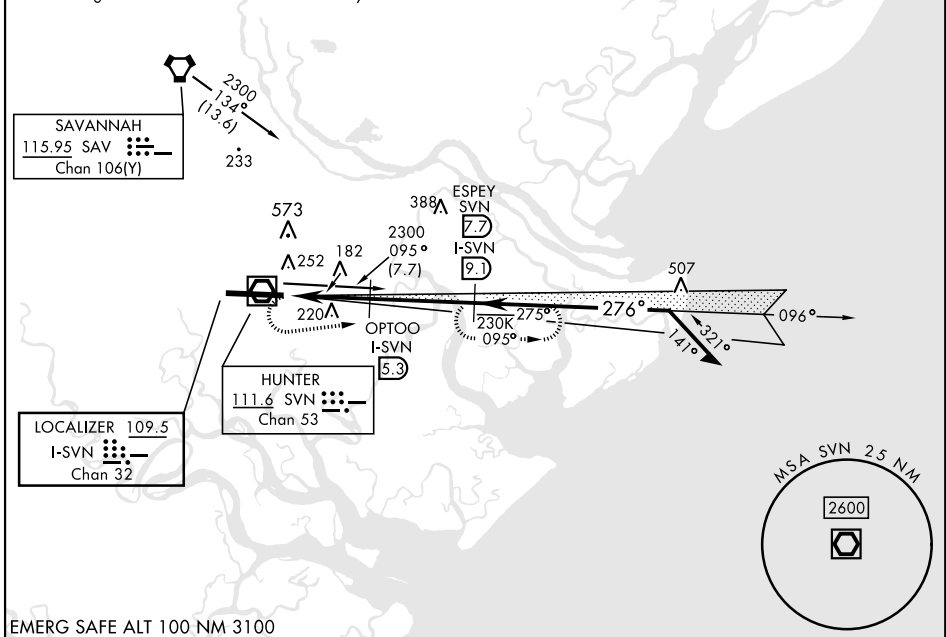
▼ * When ALS inop, increase RVR to 40, vis to ¾ mile.
 ** When ALS inop, increase CAT AB RVR to 55, vis to 1 mile, CAT CD vis to 1¼ miles.
 *** When ALS inop, increase CAT AB RVR to 55, vis to 1 mile, CAT CD vis to 1½ miles.

ALS-I-1

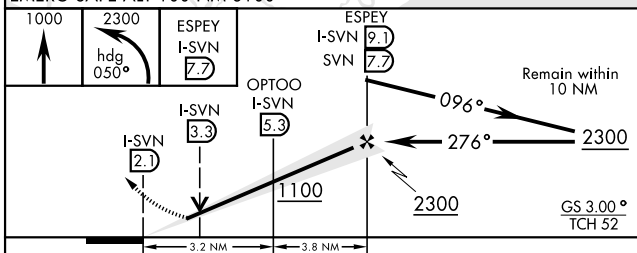
MISSED APPROACH: Climb to 1000, then climbing left turn to 2300 heading 050° and on SVN VOR/DME R-095 to ESPEY / SVN 7.7 DME and hold.

ATIS ★ 127.525 323.125	SAVANNAH APP CON ★ 120.4 353.775	TOWER ★ 124.975 (CTAF) 0 279.575	GND CON ★ 121.8 291.675
----------------------------------	--	--	-----------------------------------

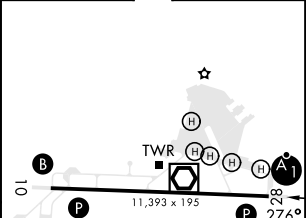
**** Circling not authorized for CAT CD N of Rwy 10-28.



EMERG SAFE ALT 100 NM 3100



ELEV 41	TDZE 41
---------	---------



CATEGORY	A	B	C	D
S-ILS 28*	241/24		200	(200-½)
S-LOC 28**	480/24	439 (500-½)	480/40	439 (500-¾)
**** C CIRCLING	600-1	559 (600-1)	600-1½	620-2
			559 (600-½)	579 (600-2)
LOCAL ALTIMETER, WITHOUT LAST STEPDOWN FIX				
S-LOC 28***	600/24	559 (600-½)	600/60	559 (600-1½)
**** C CIRCLING	600-1	559 (600-1)	600-1½	620-2
			559 (600-1%)	579 (600-2)

REIL Rwy 10	
HIRL Rwy 10-28	
FAF to MAP 7 NM	
Knots	60 90 120 150 180
Min:Sec	7:00 4:40 3:30 2:48 2:20

ILS or LOC RWY 28

SE-4, 20 FEB 2025 to 20 MAR 2025

SE-4, 20 FEB 2025 to 20 MAR 2025