

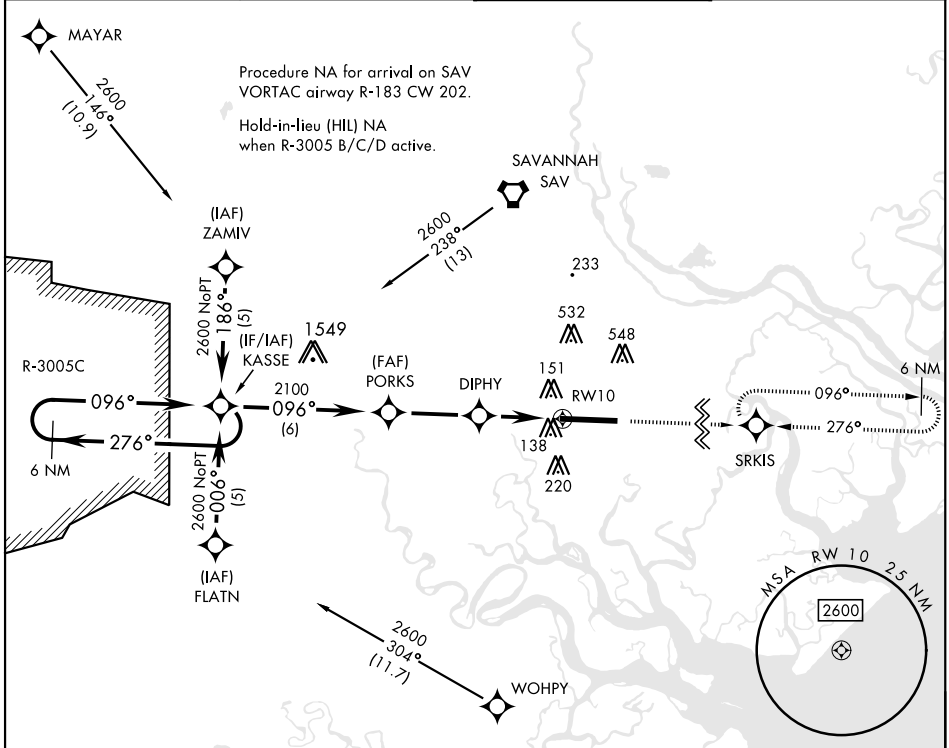
RNAV (GPS) RWY 10

APCH CRS	Rwy Idg	11,393
096°	TDZE	26
	Arprt Elev	41

[USA]

HUNTER AAF (KSVN)

RNP APCH-GPS			MISSED APPROACH: Climb to 2500 direct SRKIS and hold.
RADAR required when R-3005 B/C/D active. *When ALS inop, increase CAT AB vis to 1 mile; CAT CD vis to 1¼ miles. **Circling not authorized N of Rwy 10-28 for CAT D.			
ATIS ★ 127.525 323.125	SAVANNAH APP CON ★ 120.4 353.775	TOWER ★ 124.975 (CTAF) 0 279.575	GND CON ★ 121.8 291.675



SE-4, 20 FEB 2025 to 20 MAR 2025

SE-4, 20 FEB 2025 to 20 MAR 2025

2500 		SRKIS 		ELEV	41	TDZE	26
6 NM Holding Pattern KASSE 276° ← 2600 → 096° →		PORKS 2100 3.05 NM TCH 55		DIPHY 3 NM to RW10 1.1 NM to RW10		184 146 TWR 97 182 11,393 x 195 096°	
CATEGORY	A	B	C	D			
RNAV MDA*	460-1	434	(500-1)				
CIRCLING**	600-1	559 (600-1)	920-2½ 879 (900-2½)	920-2¾ 879 (900-2¾)			

RNAV (GPS) RWY 10