

WAAS CH <b>58122</b> <b>W22A</b>	APP CRS <b>220°</b>	Rwy Idg TDZE Apt Elev	<b>7001</b> <b>378</b> <b>378</b>
--	------------------------	-----------------------------	---

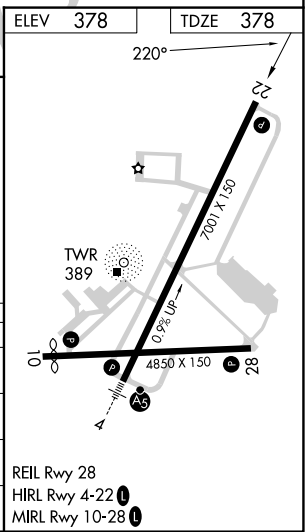
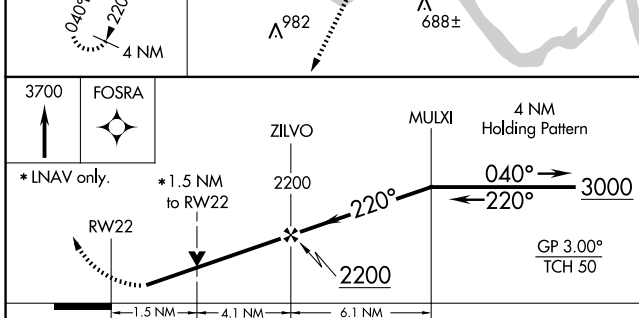
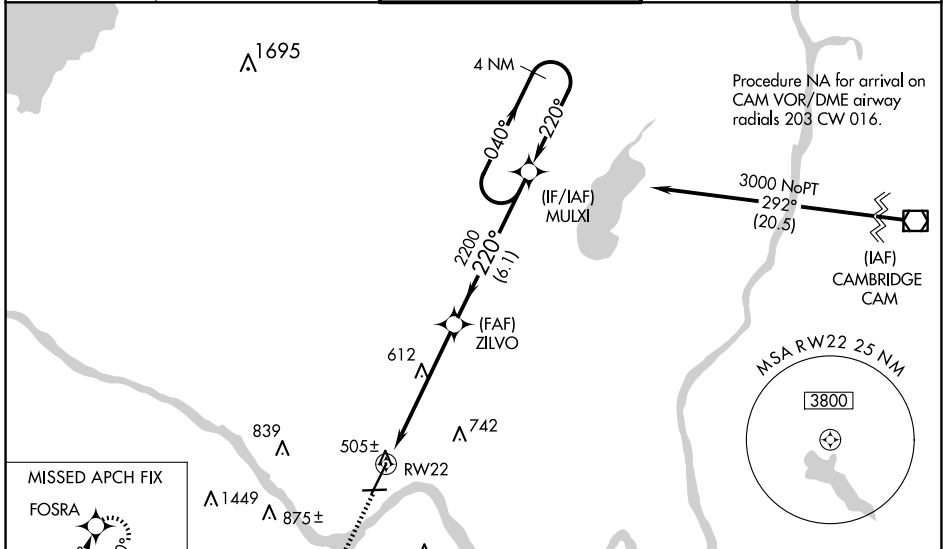
# RNAV (GPS) RWY 22

SCHENECTADY COUNTY (SCH)

**NA** Circling Rwy 10 NA at night. Baro-VNAV NA when using Albany altimeter setting. For uncompensated Baro-VNAV systems, LNAV/VNAV NA below -15°C (5°F) or above 54°C (130°F). DME/DME RNP-0.3 NA. Helicopter visibility reduction below 3/4 SM NA. VDP NA with Albany altimeter setting. When local altimeter setting not received, use Albany altimeter setting and increase LPV DA to 661, LNAV/VNAV DA to 749, and all MDA 40 feet, increase LPV and LNAV/VNAV all Cats, LNAV Cat C and D and Circling Cat C visibility 1/2 mile.

**MISSED APPROACH:**  
Climb to 3700 direct FOSRA and hold.

AWOS-3 <b>119.275</b>	ALBANY APP CON <b>132.825 263.075</b>	SCHENECTADY TOWER ★ <b>121.3 (CTAF) 321.1</b>	GND CON <b>121.9</b>	UNICOM <b>122.95</b>
--------------------------	--	--	-------------------------	-------------------------



CATEGORY	A	B	C	D
LPV DA		628-3/4	250 (300-3/4)	
LNAV/VNAV DA		716-1 1/8	338 (400-1 1/8)	
LNAV MDA	900-1	522 (600-1)	900-1 1/2	522 (600-1 1/2)
CIRCLING	900-1 522 (600-1)	940-1 562 (600-1)	1120-2 1/4 742 (800-2 1/4)	1320-3 942 (1000-3)

REIL Rwy 28  
HIRL Rwy 4-22  
MIRL Rwy 10-28

NE-2, 20 FEB 2025 to 20 MAR 2025

NE-2, 20 FEB 2025 to 20 MAR 2025