


WAAS CH 73005 W12A	APP CRS 126°	Rwy Idg TDZE Apt Elev	8279 3963 3967
--	------------------------	-----------------------------	---

RNAV (GPS) RWY 12

SCOTTSLUFF/WESTERN NEBRASKA RGNL/WM B HEILIG FLD (B,F,F')

⚠ When local altimeter setting not received, use Alliance altimeter setting and increase all DAs 91 feet and all MDAs 100 feet; increase LPV, LNAV/VNAV, LNAV Cat A/B and Circling Cat B visibilities 1/4 mile; increase LNAV and Circling Cat C/D visibilities 1/2 mile. For inoperative MALSR, when using Alliance altimeter setting, increase LPV all Cats visibility to 1 1/4, and LNAV Cat A visibility to 1. For uncompensated Baro-VNAV systems, LNAV/VNAV NA below -22°C (-7°F) or above 41°C (105°F). Baro-VNAV NA when using Alliance altimeter setting. VDP NA when using Alliance altimeter setting. DME/DME RNP-0.3 NA.

MALSR

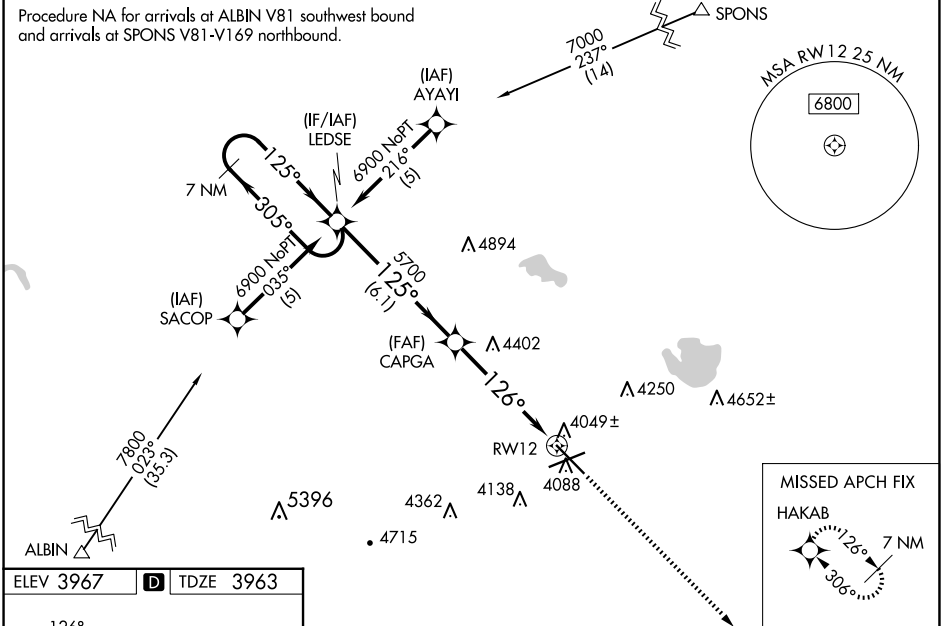


MISSED APPROACH:
Climb to 6700 direct HAKAB and hold.

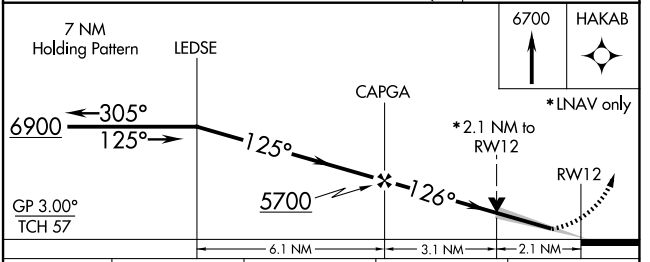
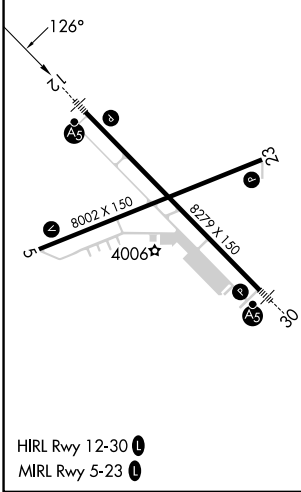
ASOS 121.025

DENVER CENTER 127.95 338.2

UNICOM 123.0 (CTAF) 0



ELEV 3967	D	TDZE 3963
-----------	----------	-----------



CATEGORY	A	B	C	D
LPV DA	4213-1/2 250 (300-1/2)			
LNAV/VNAV DA	4340-3/4 377 (400-3/4)			
LNAV MDA	4700-1/2 737 (800-1/2)	4700-1 1/2 737 (800-1 1/2)		4700-1 3/4 737 (800-1 3/4)
C CIRCLING	4700-1 733 (800-1)	4700-2 733 (800-2)		4740-2 1/2 773 (800-2 1/2)

NC-2, 20 FEB 2025 to 20 MAR 2025

NC-2, 20 FEB 2025 to 20 MAR 2025