

VORTAC BFF	Rwy Idg	8002
112.6	TDZE	3967
Chan 73	Apt Elev	3967

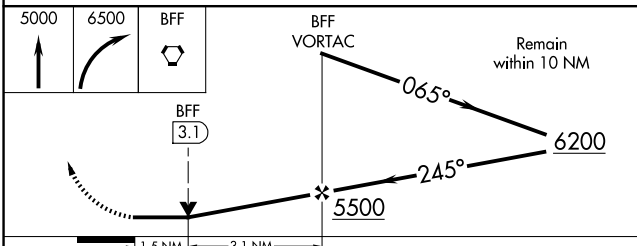
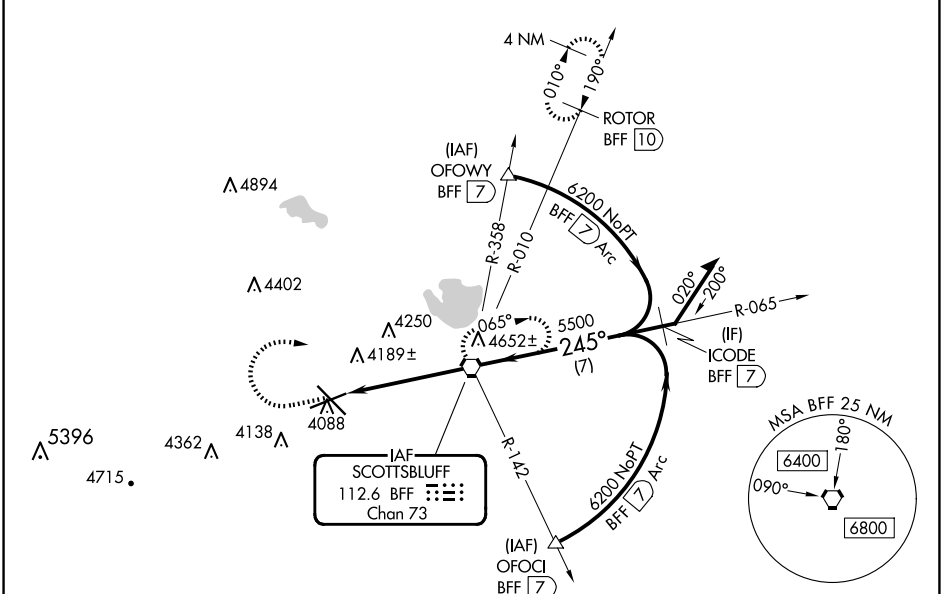
VOR or TACAN RWY 23

SCOTTSBLUFF/WESTERN NEBRASKA RGNL/WM B HEILIG FLD (BFTF)

⚠ When local altimeter setting not received, use Alliance altimeter setting: increase all MDAs 100 feet and visibility Cats C and D ½ SM. VDP NA when using Alliance altimeter setting. Visibility reduction by helicopters NA.

MISSED APPROACH: Climb to 5000 then climbing right turn to 6500 direct BFF VORTAC and hold (TACAN aircraft continue climb to 7300 via BFF R-010 to ROTOR 10 DME and hold north, right turn 190° inbound).

ASOS 121.025	DENVER CENTER 127.95 338.2	UNICOM 123.0 (CTAF) 0
------------------------	--------------------------------------	---------------------------------



ELEV 3967	D TDZE 3967
-----------	--------------------

The diagram shows the runway layout for RWY 12-30 and RWY 5-23. RWY 12-30 is 8002 x 150 feet, and RWY 5-23 is 8272 x 150 feet. The diagram also shows the 4006 star and the 245° heading.

HIRL Rwy 12-30	0
MIRL Rwy 5-23	0
FAF to MAP 4.7 NM	
Knots	60 90 120 150 180
Min:Sec	4:42 3:08 2:21 1:53 1:34

CATEGORY	A	B	C	D
S-23	4500-1 533 (600-1)	4500-1½ 533 (600-1½)	4500-1¾ 533 (600-1¾)	4500-2 533 (600-2)
C CIRCLING	4500-1 533 (600-1)	4560-1½ 593 (600-1½)	4740-2½ 773 (800-2½)	

VOR or TACAN RWY 23

NC-2, 20 FEB 2025 to 20 MAR 2025

NC-2, 20 FEB 2025 to 20 MAR 2025