

WAAS CH <b>89057</b> <b>W32A</b>	APP CRS <b>315°</b>	Rwy Idg TDZE <b>22</b> Apt Elev <b>22</b>
----------------------------------------	------------------------	-------------------------------------------------

# RNAV (GPS) Y RWY 32L

BOEING FLD/KING COUNTY INTL (BFI)

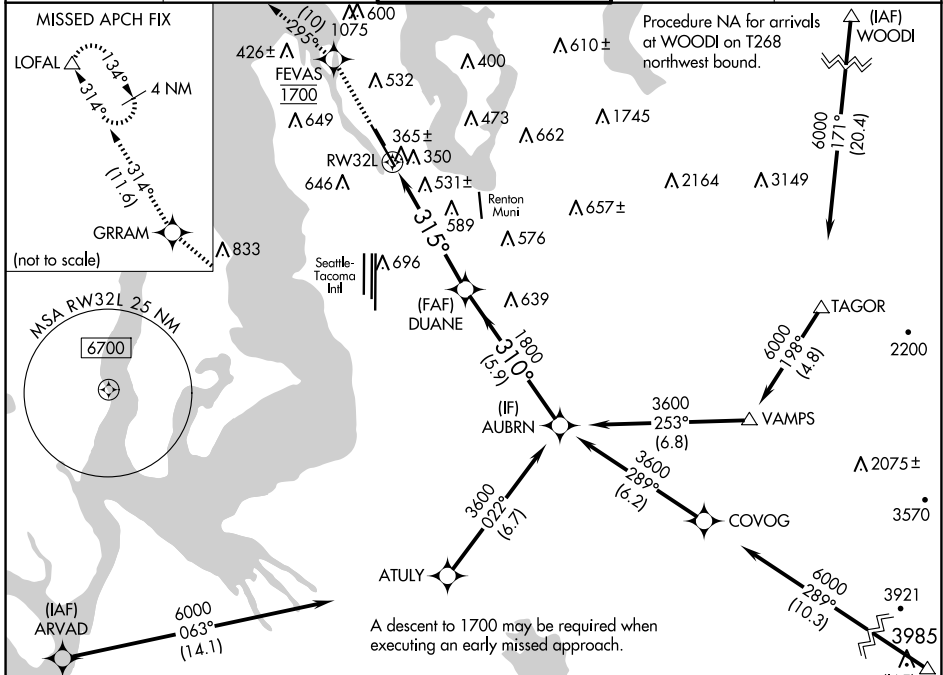
RNP APCH - GPS.

RADAR required for missed approach.

⚠ For uncompensated Baro-VNAV systems, LNAV/VNAV NA below -6°C or above 54°C. Rwy 32L helicopter visibility reduction below ¼ SM NA.

MISSED APPROACH: Climb direct FEVAS, cross FEVAS at 1700, then climb to 3000 on the RNAV missed approach route to LOFAL and hold.

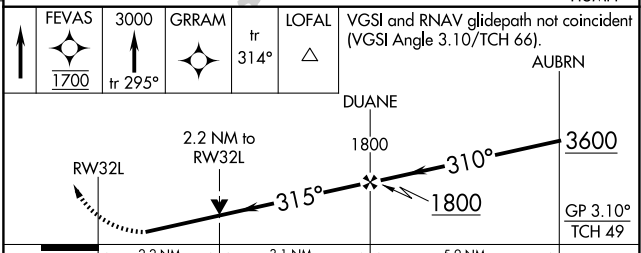
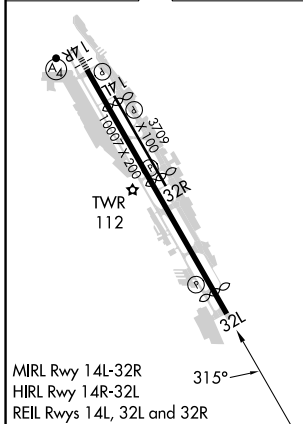
ATIS <b>127.75</b>	SEATTLE APP CON <b>125.9 306.9</b>	BOEING TOWER <b>120.6 257.8</b>	GND CON <b>121.9</b>	CLNC DEL <b>132.4</b>
-----------------------	---------------------------------------	------------------------------------	-------------------------	--------------------------



NW-1, 20 FEB 2025 to 20 MAR 2025

NW-1, 20 FEB 2025 to 20 MAR 2025

ELEV 22	<b>D</b>	TDZE 22
---------	----------	---------



CATEGORY	A	B	C	D
LPV DA	478-1 3/8 456 (500-1 3/8)			
LNAV/VNAV DA	884-2 1/2 862 (900-2 1/2)			
LNAV MDA	800-1 778 (800-1)	800-1 1/4 778 (800-1 1/4)	800-2 1/2	778 (800-2 1/2)