

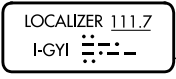
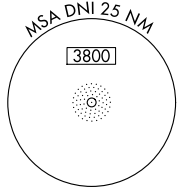
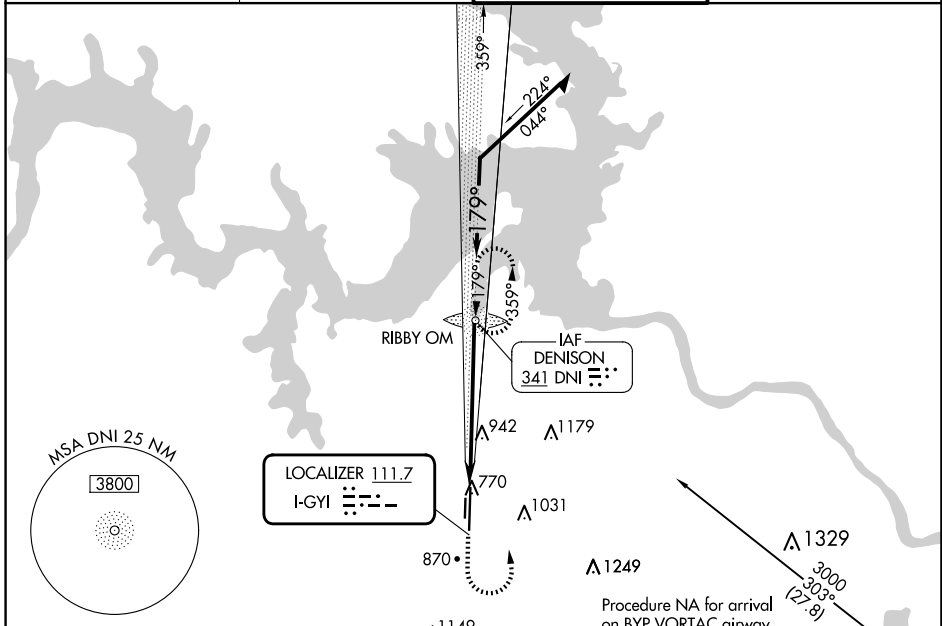
LOC I-GYI 111.7	APP CRS 179°	Rwy Idg 9000 TDZE 741 Apt Elev 749
---------------------------	------------------------	---

ILS or LOC RWY 18L

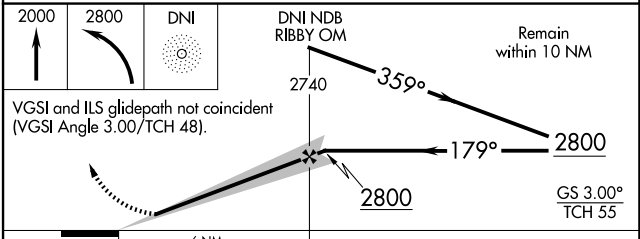
NORTH TEXAS RGNL/PERRIN FLD (GYI)

ADF required.	MALSR 	MISSED APPROACH: Climb to 2000 then climbing left turn to 2800 direct DNI NDB and hold.
Circling Rwy 18R, 36L NA at night. Autopilot coupled approach NA below 1900. For inop ALS, increase S-LOC-18L Cat C/D visibility to 1 3/8 SM.		

ATIS 118.775	FORT WORTH CENTER 124.75 323.0	NORTH TEXAS TOWER ★ 120.575 (CTAF) 233.7	GND CON 124.125
------------------------	--	--	---------------------------



ELEV 749	TDZE 741
179°	
18L	
36L	
36R	
TWR 973	
MIRL Rwy 18L-36R	
FAF to MAP 6 NM	
Knots	60 90 120 150 180
Min:Sec	6:00 4:00 3:00 2:24 2:00



CATEGORY	A	B	C	D
S-ILS 18L	941-1/2		200 (200-1/2)	
S-LOC 18L	1220-1/2	479 (500-1/2)	1220-1	479 (500-1)
<input checked="" type="checkbox"/> CIRCLING	1300-1	551 (600-1)	1400-1 3/4	1540-2 1/2
			651 (700-1 3/4)	791 (800-2 1/2)

SC-2, 20 FEB 2025 to 20 MAR 2025

SC-2, 20 FEB 2025 to 20 MAR 2025