

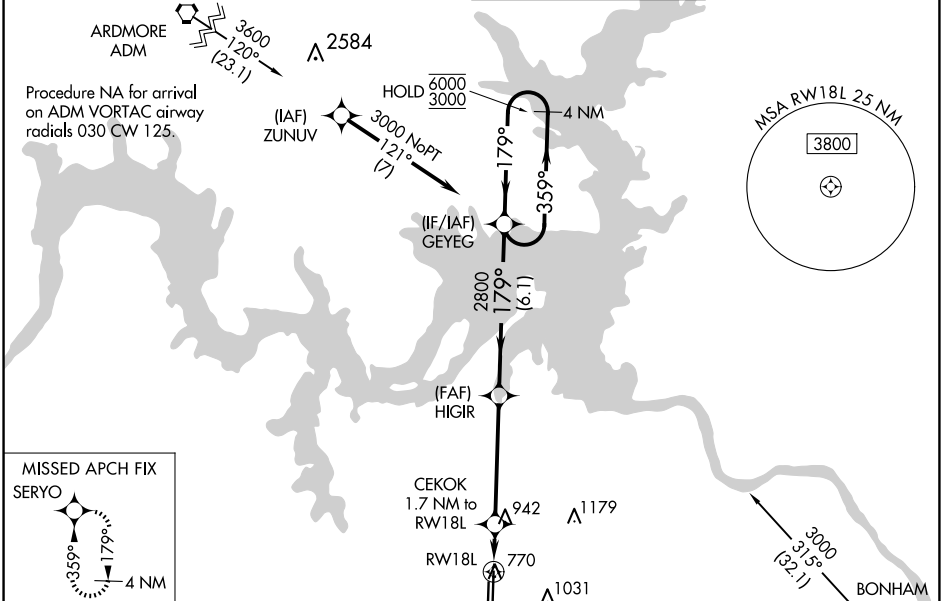
WAAS CH <b>86528</b> <b>W18A</b>	APP CRS <b>179°</b>	Rwy Idg <b>9000</b> TDZE <b>741</b> Apt Elev <b>749</b>
--	------------------------	---

# RNAV (GPS) RWY 18L

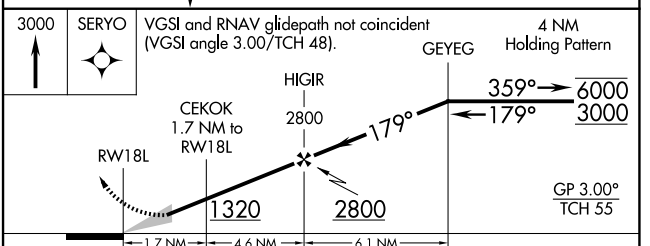
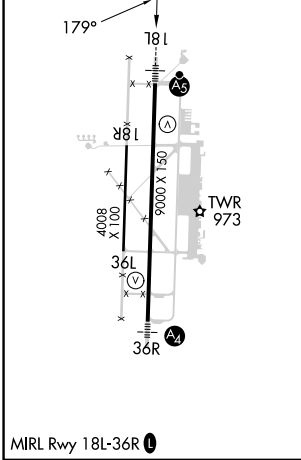
NORTH TEXAS RGNL/PERRIN FLD (GYI)

RNP APCH - GPS.		MALSR	MISSED APPROACH: Climb to 3000 direct SERYO and hold.
<p><b>⚠</b> Circling Rwy 18R, 36L NA at night. For uncompensated Baro-VNAV systems, LNAV/VNAV NA below -10°C or above 54°C. For inop ALS, increase LNAV/VNAV all Cats visibility to 7/5 SM.</p>			

ATIS <b>118.775</b>	FORT WORTH CENTER <b>124.75 323.0</b>	NORTH TEXAS TOWER ★ <b>120.575 (CTAF) 233.7</b>	GND CON <b>124.125</b>
------------------------	--	--	---------------------------



ELEV 749	TDZE 741
----------	----------



CATEGORY	A	B	C	D
LPV DA		941-½	200 (200-½)	
LNAV/VNAV DA		1015-½	274 (300-½)	
LNAV MDA	1200-½	459 (500-½)	1200-7/8	459 (500-7/8)
<b>ⓐ</b> CIRCLING	1300-1	551 (600-1)	1400-1¾ 651 (700-1¾)	1540-2½ 791 (800-2½)

SC-2, 20 FEB 2025 to 20 MAR 2025

SC-2, 20 FEB 2025 to 20 MAR 2025