

VORTAC BYP <b>114.6</b> Chan <b>93</b>	APP CRS <b>290°</b>	Rwy Idg TDZE Apt Elev	<b>N/A</b> <b>N/A</b> <b>749</b>
--	------------------------	-----------------------------	--

# VOR-A

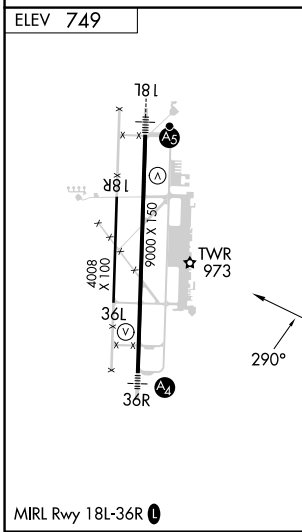
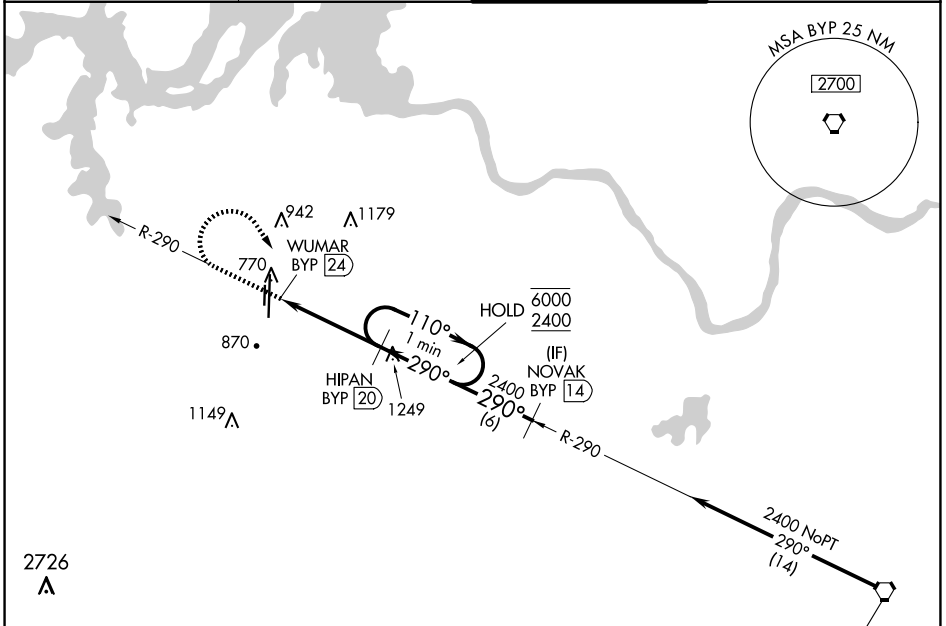
NORTH TEXAS RGNL/PERRIN FLD (GYI)

DME required.

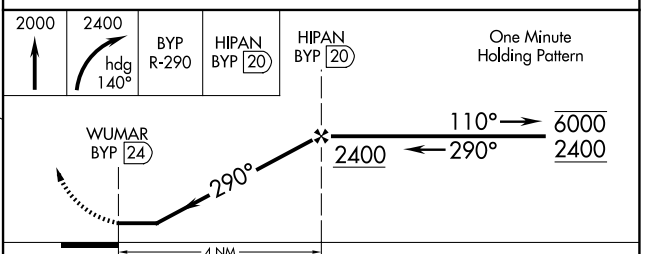
**⚠** Circling Rwy 18R, 36L NA at night.

MISSED APPROACH: Climb to 2000 then climbing right turn to 2400 on heading 140° and BYP VORTAC R-290 to HIPAN/20 DME and hold.

ATIS <b>118.775</b>	FORT WORTH CENTER <b>124.75 323.0</b>	NORTH TEXAS TOWER ★ <b>120.575</b> (CTAF) <b>233.7</b>	GND CON <b>124.125</b>
------------------------	--	---	---------------------------



Procedure NA for arrival on BYP VORTAC airway radials 264 CW 305.



CATEGORY	A	B	C	D
<b>C</b> CIRCLING	1340-1	591 (600-1)	1400-1¾ 651 (700-1¾)	1540-2½ 791 (800-2½)

# VOR-A

SC-2, 20 FEB 2025 to 20 MAR 2025

SC-2, 20 FEB 2025 to 20 MAR 2025