

WAAS CH <b>66003</b> W13A	APP CRS <b>135°</b>	Rwy Idg <b>5022</b> TDZE <b>3273</b> Apt Elev <b>3275</b>
---------------------------------	------------------------	---

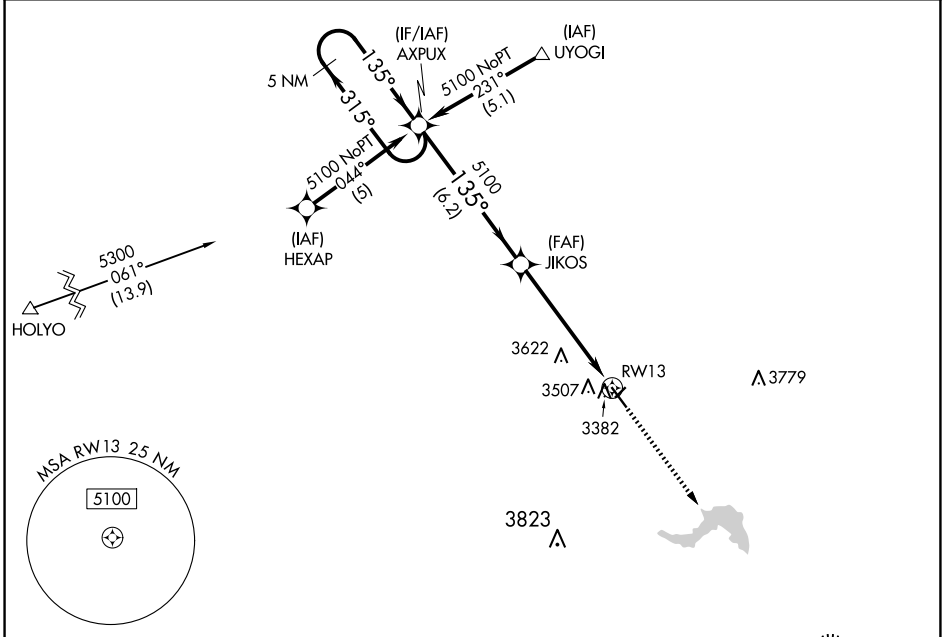
# RNAV (GPS) RWY 13

IMPERIAL MUNI (IML)

**⚠** For uncompensated Baro-VNAV systems, LNAV/VNAV NA below -21°C (-5°F) or above 54°C (130°F). DME/DME RNP-0.3 NA. Helicopter visibility reduction below 3/4 SM NA. If local altimeter setting not received, use Ogallala altimeter setting and increase all DAs 86 feet and all MDAs 100 feet. VDP and Baro-VNAV NA when using Ogallala altimeter setting. Circling NA to Rlys 3 and 21.

**MISSED APPROACH:** Climb to 5000 direct AQIMU and hold.

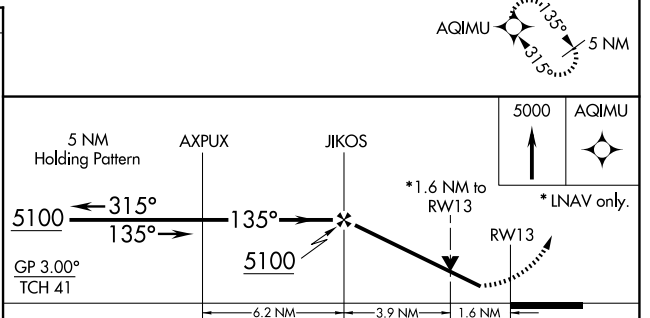
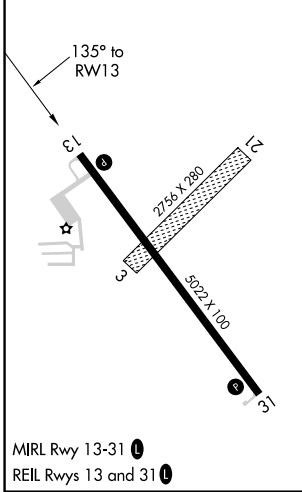
ASOS <b>124.175</b>	DENVER CENTER <b>132.7 397.85</b>	UNICOM <b>122.8 (CTAF) 0</b>
------------------------	--------------------------------------	---------------------------------



NC-2, 20 FEB 2025 to 20 MAR 2025

NC-2, 20 FEB 2025 to 20 MAR 2025

ELEV <b>3275</b>	TDZE <b>3273</b>
------------------	------------------



CATEGORY	A	B	C	D
LPV DA	3548-1	275 (300-1)		NA
LNAV/VNAV DA	3752-1 3/4	479 (500-1 1/4)		NA
LNAV MDA	3820-1	547 (600-1)		NA
CIRCLING	3860-1	585 (600-1)		NA