

HI-ILS or LOC Z RWY 33

LOC I-BAD 109.9	APCH CRS 329°	Rwy ldg 11,758 THRE 161 Arprt Elev 165
---------------------------	-------------------------	--

[USAF]

BARKSDALE AFB (KBAD)

RADAR or DME required

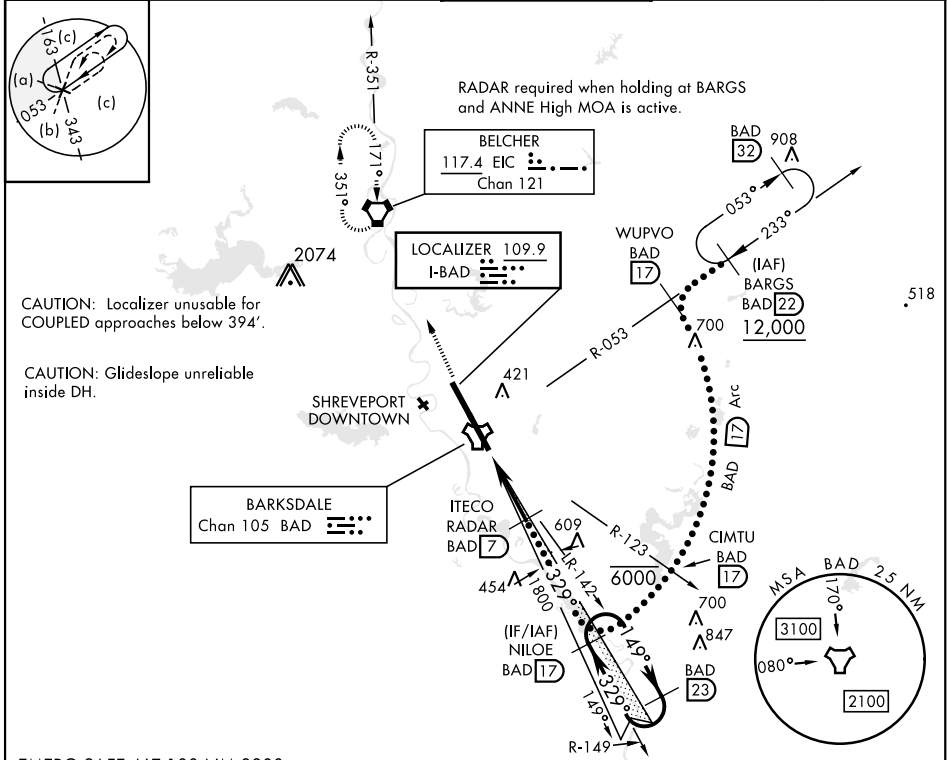
ALSF-1

MISSED APPROACH: Climb to 3100 direct to EIC VORTAC and hold.

*When ALS inop, increase CAT CDE RVR to 40 and vis to 3/4 mile.
 **When ALS inop, increase CAT CDE RVR to 60 and vis to 1 1/8 miles.
 *** Circling not authorized W of Rwy.



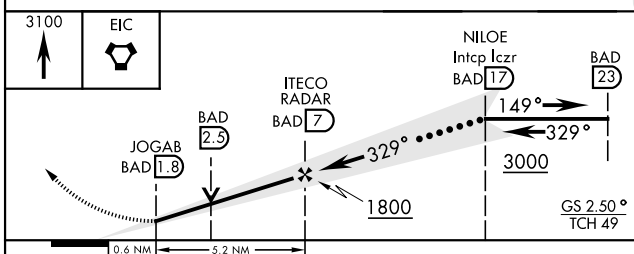
ATIS 307.025	SHREVEPORT APP CON 320°-152° 123.75 360.725 153°-319° 119.9 335.55	TOWER* 128.25 278.3	GND CON 121.8 253.5	ASR
------------------------	--	--------------------------------------	--------------------------------------	-----



CAUTION: Localizer unusable for COUPLED approaches below 394'.

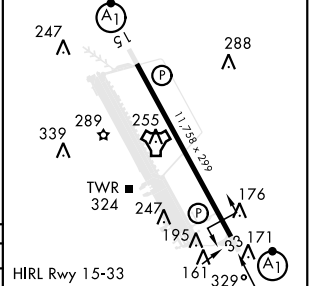
CAUTION: Glideslope unreliable inside DH.

EMERG SAFE ALT 100 NM 3300



ELEV	165	THRE	161
------	-----	------	-----

CATEGORY	C	D	E
S-ILS 33*	361/24	200	(200-1/2)
S-LOC 33**	560/35	399	(400-%)
***		760-2 595 (600-2)	780-2 1/4 615 (700-2 1/4)



FAF to MAP 5.3 NM					
Knots	120	140	160	180	200
Min:Sec	2:36	2:14	1:57	1:44	1:34

HI-ILS or LOC Z RWY 33

SC-4, 20 FEB 2025 to 20 MAR 2025

SC-4, 20 FEB 2025 to 20 MAR 2025